

NOTICE CONCERNING COPYRIGHT RESTRICTIONS

This document may contain copyrighted materials. These materials have been made available for use in research, teaching, and private study, but may not be used for any commercial purpose. Users may not otherwise copy, reproduce, retransmit, distribute, publish, commercially exploit or otherwise transfer any material.

The copyright law of the United States (Title 17, United States Code) governs the making of photocopies or other reproductions of copyrighted material.

Under certain conditions specified in the law, libraries and archives are authorized to furnish a photocopy or other reproduction. One of these specific conditions is that the photocopy or reproduction is not to be "used for any purpose other than private study, scholarship, or research." If a user makes a request for, or later uses, a photocopy or reproduction for purposes in excess of "fair use," that user may be liable for copyright infringement.

This institution reserves the right to refuse to accept a copying order if, in its judgment, fulfillment of the order would involve violation of copyright law.

NATIONAL PLANNING ANALYSIS

Fred Abel

Department of Energy

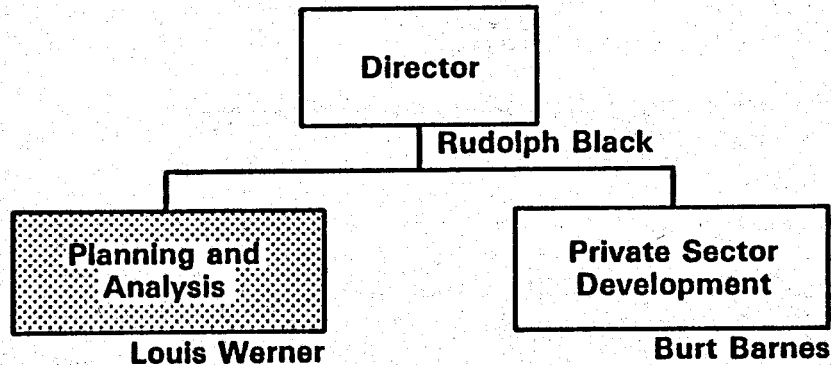
The headquarters planning and analysis activity provides information needed to determine the nature, scope and size of the DOE geothermal program, to develop policy initiative, and to coordinate interagency and international geothermal activities. This information is also used to define the program during the budget process, including congressional hearings and response to issues from the Administration, Congress or the private sectors.

The studies on economic and institutional issues can also be used to help direct and support the commercialization program in the field. This is particularly true of the cost, market penetration, decision analysis and legal studies.

Current problems include how to convince the Administration and Congress that geothermal energy can and should be a significant contribution to the national energy program, that this contribution is one of the lowest cost sources of domestic energy and that an expanded federal geothermal program is one of the most cost effective means of providing significant domestic energy in the near term.

The role of the field organizations (state, regional offices, operations offices, national laboratories and research institutes) is essential in implementing the commercialization program. It is also important in providing information to support the national planning effort. This can be done informally in meetings such as this and formally through the geothermal progress monitor, by providing results from state plans and by providing information to those conducting planning studies.

Division of Geothermal Resource Management



PN 80-21038 1/8

Planning and Analysis

Purpose

- Develop Geothermal Strategy
- Determine Geothermal Program
- Develop Legislation and Policy
- Provide Department Coordination
- Provide Interagency Coordination

PN 80-21038 2/9

Planning and Analysis

Program Areas

- Program Planning
- Barrier Analysis and Policy Development
- Progress Monitor and Data Files
- Interagency Coordination and International

PN 80-21038 2/8

Planning and Analysis

Program Planning

- Strategy Analysis
 - MITRE
 - The FUTURES Group
- Planning Analysis
 - MITRE
 - CONSAD
 - Cost Shared Drilling
 - EG&G
 - Cost Shared Drilling
- Decision Analysis
 - TECHNECON
 - Electric Utilities
 - Electric Production
 - Direct Heat

PN 80-21038 4/8

Planning and Analysis

Program Planning (Cont.)

- **Cost/Benefit**
 - **Pacific Northwest Lab. (Battelle)**
 - Cost Curves
 - R&D Impacts
 - Costs (Japan)
 - Costs (Aluminum)
 - Solar Competitiveness
 - **JPL**
 - Probabilistic Cost Model
 - **ERCO**
 - Financial Model
 - **CONSAD**
 - Economic Incentive Impact
 - Social Cost/Benefit
 - **EER**
 - Integration of Economic Studies

PN 80-21038 5/8

Planning and Analysis

Program Planning (Cont.)

- **Market Penetration**
 - **New Mexico Energy Institute**
 - User Survey Approach
 - **MITRE**
 - Technology Diffusion Approach
 - **Technical Research and Analysis Company**
 - Technology Diffusion Approach
 - **Sterling Hobe Corp.**
 - Growth Industries
 - Location Decisions
 - **United Indian Planners Association**
 - Planning Assistance
- **Environment**
 - **Pacific Northwest Lab. (Battelle)**
 - Fluid Disposal Costs
 - H₂S Control Costs
 - Environmental Benefits

PN 80-21038 5/8

Planning and Analysis

Barrier Analysis and Policy Development

- **Legislative Watch Dog**
 - National Conference of State Legislatures
 - Energy Decision, Inc.
- **Legal Studies**
 - McNamara
 - Earl Warren Legal Institute
- **Industry Structure Study**
 - Booz-Allen and Hamilton, Inc.

PN 80-21030 7/9

Planning and Analysis

Progress Monitor and Data File

- **National Project Center**
 - MITRE
- **Project Management System**
 - MITRE
- **Regional Aggregation and Analysis**
 - Regions
- **Site Development File**
 - Lawrence Berkeley Lab

PN 80-21030 8/9

Planning and Analysis

Interagency Coordination and International

- **Interagency Geothermal Coordinating Council**
 - **The FUTURES Group**
 - Annual Report
 - Committee Support
 - **MITRE**
 - Goals Analysis
 - National Plans and Strategy
- **International**
 - **The FUTURES Group**
 - **Earl Warren Legal Institute**

PN 80-21038 9/8