

NOTICE CONCERNING COPYRIGHT RESTRICTIONS

This document may contain copyrighted materials. These materials have been made available for use in research, teaching, and private study, but may not be used for any commercial purpose. Users may not otherwise copy, reproduce, retransmit, distribute, publish, commercially exploit or otherwise transfer any material.

The copyright law of the United States (Title 17, United States Code) governs the making of photocopies or other reproductions of copyrighted material.

Under certain conditions specified in the law, libraries and archives are authorized to furnish a photocopy or other reproduction. One of these specific conditions is that the photocopy or reproduction is not to be "used for any purpose other than private study, scholarship, or research." If a user makes a request for, or later uses, a photocopy or reproduction for purposes in excess of "fair use," that user may be liable for copyright infringement.

This institution reserves the right to refuse to accept a copying order if, in its judgment, fulfillment of the order would involve violation of copyright law.

STRATIGRAPHY AND STRUCTURE OF THE
COLUMBIA RIVER BASALT GROUP IN THE CASCADE
RANGE, OREGON

By

Marvin H. Beeson and Michael R. Moran
Earth Sciences Department,
Portland State University

Final report of work carried out under PSU Grant No. 90-262-
8126 From the Oregon Department of Geology and Mineral Indus-
tries; June 1977 through March, 1978.

CONTENTS

	Page
ABSTRACT.....	9
I. COLUMBIA RIVER BASALT STRATIGRAPHY IN WESTERN OREGON.....	12
II. STRATIGRAPHY AND STRUCTURE OF THE COLUMBIA RIVER BASALT IN REGIONS WITHIN THE CASCADE RANGE.....	21
A. Hood River Area.....	21
<u>Structure and Stratigraphy</u>	21
<u>Geologic History</u>	25
B. Bull Run Watershed Area.....	28
<u>Introduction</u>	28
<u>Structure and Stratigraphy</u>	30
C. Salmon River Area.....	39
<u>Introduction</u>	39
<u>Structure and Stratigraphy</u>	39
<u>Geologic History</u>	41
D. Clackamas River Area.....	42
<u>Introduction</u>	42
<u>Structure and Stratigraphy</u>	43
<u>Geologic History</u>	50
E. Old Maid Flat Exploratory Hole.....	51
III. GENERALIZED STRUCTURAL MODEL FOR COLUMBIA RIVER BASALT IN THE CASCADE RANGE.....	57
A. Introduction.....	57
B. NE Trending Folds and Thrust Faults.....	57
C. Wrench Fault Zone.....	62
D. NW Trending Faults and Fractures.....	62
E. Cascade Upwarp and Subsidence.....	63

IV. GEOLOGIC HISTORY.....	69
A. Pre-Columbia River Basalt.....	69
B. Columbia River Basalt.....	69
C. Post-Columbia River Basalt.....	71

FIGURES

Figure		Page
I-1	LOCATION MAP.....	11
II-1	DISTRIBUTION OF COLUMBIA RIVER BASALT GROUP IN OREGON, WASHINGTON, AND IDAHO.....	13
II-2	COLUMBIA RIVER BASALT GROUP STRATIGRAPHY.....	14
II-3	STRATIGRAPHY OF THE COLUMBIA RIVER BASALT GROUP IN WESTERN OREGON.....	16
II-4	DISTINCTIVE CHARACTERISTICS OF WESTERN OREGON COLUMBIA RIVER BASALT GROUP STRATIGRAPHIC UNITS.....	17
III-1	TECTONIC MAP OF THE CLACKAMAS RIVER AREA.....	44
III-2	GENERALIZED STRATIGRAPHIC COLUMN FOR COLUMBIA RIVER BASALT IN THE CLACKAMAS RIVER AREA.....	47
III-3	GEOCHEMICAL DATA ON SAMPLES FROM OLD MAID FLAT EXPLORATORY HOLE.....	53
III-4	COLUMBIA RIVER BASALT STRATIGRAPHY IN OLD MAID FLAT HOLE.....	54
IV-1	DEVELOPMENT OF BULL RUN THRUST FAULT.....	61
IV-2	PATTERN OF FAULTING.....	64
IV-3	FRACTURE PATTERN CONTROLLING STREAM TREND.....	65
	GEOLOGIC AND REGIONAL STRUCTURE MAPS (6) (Maps not conducive to printing)	

ABSTRACT

The Columbia River Basalt Group lava flows identified in the Mt. Hood area of the Oregon Cascade Range are assigned to the Grande Ronde Basalt and Wanapum Basalt formations of the Yakima Basalt Subgroup, except for three intercalated flows of Prineville chemical type. The composite section has a stratigraphic thickness of approximately 550 m and consists of 26 flows that can be separated into eight distinct geochemical and/or magnetic polarity subdivisions.

Deformation began during the incursion of the Grande Ronde Basalt and is represented by NE trending folds traversing the Cascade Range which have structural relief of approximately 300 m and by an echelon NNW to NW trending folds and faults that occur from the Clackamas River area to Portland along the Portland Hills - Brothers fault trend. During this stage of deformation, thrust faults developed parallel to some of the anticlinal axes in patterns similar to those of the Columbia Plateau. Later deformation includes vertical N10W to N55W strike slip faulting, which, when considered with the fold trends, indicates a right lateral wrench system of regional magnitude. The Columbia Plateau style of deformation clearly crosses the axis of the Cascades with several of the larger folds being present in both provinces. A N30W trending fault located just west of the Salmon River separates the NE trending folds through the Cascades from the Portland Hills - Brothers wrench fault trend.

Distribution of the Columbia River Basalt in the area surrounding Mt. Hood and its deeper occurrences in the exploratory hole at Old Maid Flat indicates that the basalt may have been downdropped along much of the axial region of the range.

The major exposures of CRB utilized in this study are (Figure I-1):

Clackamas River Area (mapped by James L. Anderson, unpublished Master's thesis, Portland State University).

Bull Run Watershed (mapped by Beverly Vogt, unpublished Master's thesis, Portland State University).

Hood River Drainage and Hood River fault zone (mapped by Susan Timm, unpublished Master's thesis, Portland State University).

The Salmon River Area (mapped by M. H. Beeson and M. R. Moran).

The Columbia River Gorge which consists of one large exposure of CRB through the Cascade Range was not mapped for this report although some data were available from both published literature and isolated sections studied by Mr. M. R. Moran (unpublished Master's thesis, Portland State University).

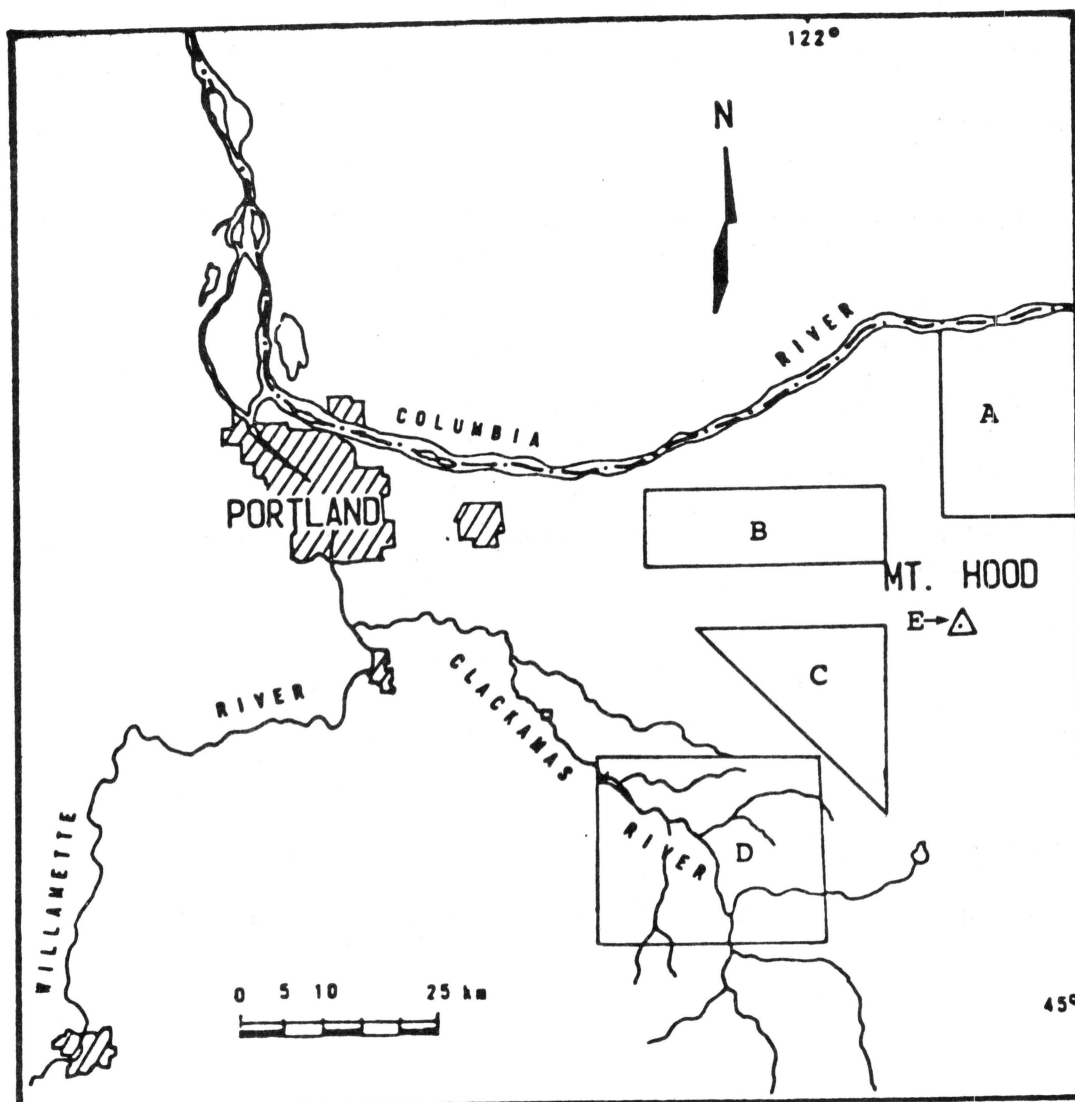


Figure I-1. Location Map

- A - Hood River Area
- B - Bull Run Watershed Area
- C - Salmon River Area
- D - Clackamas River Area
- E - Old Maid Flat Exploratory Hole

II. COLUMBIA RIVER BASALT GROUP STRATIGRAPHY IN WESTERN OREGON

The Miocene Columbia River Basalt Group in Oregon, Washington, and Idaho is an accumulation of tholeiitic flood basalt flows covering approximately 2×10^5 km² (Figure II-1; Waters, 1962). These fluid flows spread over this region, the Columbia Plateau, as nearly horizontal sheets, attaining a total thickness of at least 1,500 m near Pasco, Washington (Asaro and others, 1978). The flows were extruded from large N to NW trending fissure systems in the eastern half of the plateau (Waters, 1961; Taubeneck, 1970; Swanson and others, 1975) between approximately 16 and 6 million years ago (Watkins and Baksi, 1974; McKee and others, 1977).

The stratigraphic subdivisions and nomenclature have undergone a number of revisions and refinements as mapping has progressed and as modern geochemical and paleomagnetic data have accumulated. Many contributions have been made to the Columbia River Basalt Group stratigraphy, some of the more noteworthy being Waters (1961, 1962); Mackin (1961); Schmincke (1967); Wright and others (1973); and Nathan and Fruchter (1974). The Group is divided into five formations (Figure II-2). Two of these, the Imnaha Basalt and the Picture Gorge Basalt, are restricted to the southeastern and southern portions of the province, respectively; the remaining three, the Grande Ronde Basalt, the Wanapum Basalt, and the Saddle Mountains Basalt, are grouped together as the Yakima Basalt Subgroup. All of the Columbia River Basalt Group flows identified west of the axis of the Cascade

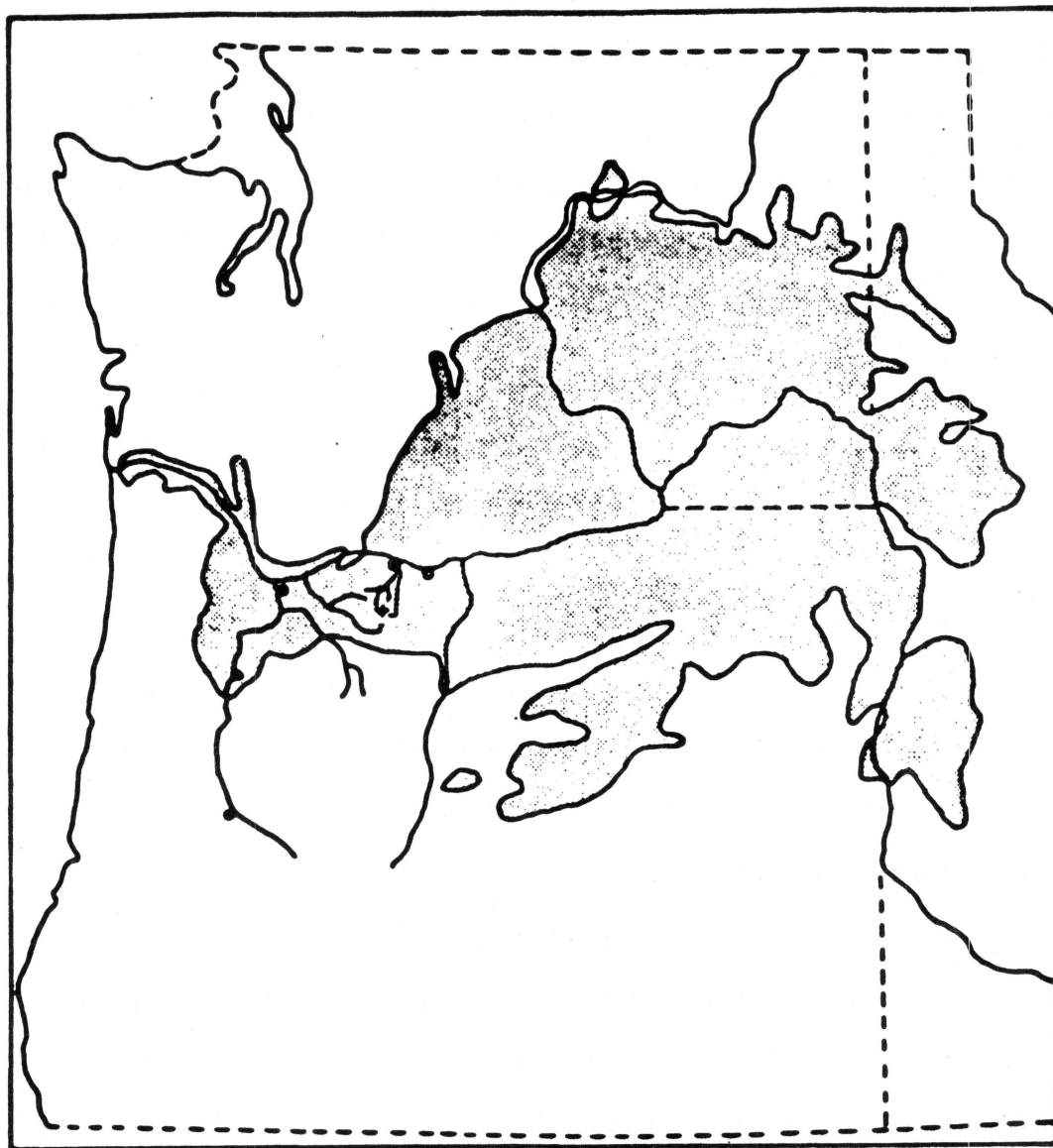


Figure II-1. Distribution of Columbia River Basalt Group in Oregon, Washington, and Idaho; + Mt. Hood.


SERIES	GROUP	SUB GROUP	FORMATION	MEMBER OR FLOW	R-M AGE (m.y.)	MAGNETIC POLARITY		
MIOCENE	UPPER MIOCENE	COLUMBIA RIVER BASALT GROUP	SADDLE MOUNTAINS BASALT	LOWER MONUMENTAL MEMBER	6	N		
				EROSIONAL UNCONFORMITY				
				ICE HARBOR MEMBER				
				BASALT OF GOOSE ISLAND	8.5	N		
				BASALT OF MARTINDALE	8.5	R		
				BASALT OF BASIN CITY	8.5	N		
				EROSIONAL UNCONFORMITY				
				BUFORD MEMBER		R		
				ELEPHANT MOUNTAIN MEMBER	10.5	N,T		
				EROSIONAL UNCONFORMITY				
				MATTAWA FLOW		N		
				POMONA MEMBER	12			
				EROSIONAL UNCONFORMITY				
				ESQUATZEL MEMBER		N		
				EROSIONAL UNCONFORMITY				
				WEISSENFELS RIDGE MEMBER		N		
				BASALT OF SLIPPERY CREEK				
				BASALT OF LEWISTON ORCHARDS		N		
				ASOTIN MEMBER		N		
				LOCAL EROSIONAL UNCONFORMITY				
	WILBUR CREEK MEMBER			N				
	UMATILLA MEMBER			N				
	LOCAL EROSIONAL UNCONFORMITY							
	MIDDLE MIOCENE		YAKIMA BASALT SUBGROUP		WANAPUM BASALT	PRIEST RAPIDS MEMBER		R ₁
						ROZA MEMBER		R ₂
						FRENCHMAN SPRINGS MEMBER		N ₁
						ECKLER MOUNTAIN MEMBER		
						BASALT OF SHUMAKER CREEK		N ₁
						BASALT OF DODGE		N ₁
						BASALT OF ROBINETTE MOUNTAIN		N ₁
					GRANDE RONDE BASALT			N ₁
								R ₁
							N ₁	
							R ₁	
							R ₁	
						T		
						N ₁		
						R ₁		
LOWER MIOCENE	PICTURE GORGE BASALT		IMNAHA BASALT					

Figure II-2. Columbia River Basalt Group Stratigraphy

Mountains belong to this subgroup, with the exception of flows of the Prineville chemical type, discussed below. The coastal Miocene basalts of Oregon and Washington form three distinct stratigraphic units that are consanguineous with the three formations of the Yakima Basalt Subgroup (Snively and others, 1973).

Some of the basalt flows originating in the eastern part of the Columbia Plateau flowed into western Oregon through a topographic low in the ancestral Cascade Mountains. This low extended from the Clackamas River drainage on the south to the present Columbia River Gorge on the north. The Yakima Basalt Subgroup, about 1,500 m thick in the Pasco Basin of Washington, thins to approximately 550 m in the Cascade Range. Many stratigraphic members recognized on the plateau are not present or comprise fewer flows in western Oregon. The Saddle Mountains Basalt, which ranges from 150 to 275 m thick in the Pasco Basin, has not been found in the Cascade Range, even though the Pomona Member is present near the Columbia River in the Coast Range of Oregon and Washington (Snively and others, 1973; Kienle, 1971). The members of the Yakima Basalt Subgroup that occur in western Oregon are indicated in Figure II-2.

In western Oregon, the Columbia River Basalt Group comprises approximately 29 basalt flows which may be divided into three formations of the Yakima Basalt Subgroup (Figure II-3). Distinctive characteristics of each member and of other informal subdivisions are given in Figure II-4. These units are tentatively identifiable in the field on the basis

SUBGROUP	FORMATION	MEMBER	FLOW UNITS	INFORMAL UNITS	MAGNETIC POLARITY
YAKIMA BASALT	SADDLE MOUNTAINS BASALT	POMONA	1		R
	WANAPUM BASALT	PRIEST RAPIDS	2		R
		FRENCHMAN SPRINGS	7		N ₂
	GRANDE RONDE BASALT	(High Mg Chemical Type)	2	WAVERLY *	N ₂
		(Low Mg Chemical Type)	2		
			1		
			1 / 1	PRINEVILLE	
			4		N ₂
			2 / 2	PRINEVILLE	R ₂
			3		R ₂
			1		N ₁

Figure II-3. Stratigraphy of the Columbia River Basalt Group in western Oregon

Figure II-4. Distinctive characteristics of western Oregon Columbia River Basalt Group stratigraphic units

STRATIGRAPHIC UNIT	FIELD CRITERIA Jointing, polarity & lithology	LABORATORY CRITERIA Geochemistry** & petrography
Pomona Member	Blocky to columnar jointing Reversed polarity Clear plagioclase phenocrysts (3-4 mm) Clots of plagioclase and pyroxene	Sm <5 La <20 Fe <8%
Priest Rapids Member	Reversed polarity Coarse sugary texture	Sm >7 La 25-30 Sc 35-40 Eu ≥2.5
Frenchman Springs Member	Well-formed colonnade Normal polarity Texture often coarse Large (1-cm) plagioclase phenocrysts	Sm >7 La 25-30 Sc 35-40 Eu ≤2.5
*High Mg Grande Ronde Basalt	Blocky and platy jointing Normal polarity Coarse texture	Sm <6 La 20-24 Sc 35-40
*Waverly flows	Upper flow - very poorly jointed Lower flow - large columns with platy jointing Normal polarity	Sm <6 La 15-18 Upper flow - clots of plagioclase and pyroxene Lower flow - pilotaxitic
*Low Mg Grande Ronde Basalt	Well-formed entablature Fine texture	Sm <7 La 25-30 Sc 30-35
*Prineville flows	Well-formed blocky to wavy colonnade Fine texture	Ba ~2,000 Eu >4 Co <35 Abundant apatite laths

* Informal units.

** Geochemical data obtained by neutron activation analysis. All data in parts per million except where specified.

of jointing characteristics, magnetic polarity, grain size, and the presence or absence of large plagioclase phenocrysts. Laboratory data, especially major or trace element chemistry, are necessary for more accurate determinations.

Grande Ronde Basalt is the most widespread of all the Columbia River Basalt Group formations in western Oregon; occurring almost everywhere the CRB has been mapped. Of the four magnetic polarity intervals formally recognized within the Grande Ronde Basalt, only the oldest, a reversed interval (R_1), has not been found in western Oregon. The oldest normal interval (N_1) is represented by a single flow that occurs at the bottoms of the sections in Multnomah Creek and in the Clackamas River (Anderson, 1978).

Grande Ronde Basalt may also be divided chemically on the basis of magnesium content into "Low Mg" and "High Mg" flows (Figure II-3). In western Oregon, two High Mg flows occur as the top two flows of the Grande Ronde Basalt. Because of their distinctive jointing patterns and textures, the two High Mg flows are generally distinguishable in the field from the Low Mg flows, and this informal subdivision is therefore useful for geologic mapping in western Oregon. In the Columbia Plateau, however, the High Mg flows may also occur lower in the Grande Ronde Basalt section (D. A. Swanson, personal communication).

The Grande Ronde Basalt section in western Oregon also contains localized units that do not occur extensively in the plateau and are not formally recognized. In the Clackamas River area, two flows of the chemically distinctive Prineville

chemical type (Uppuluri, 1974) occur at the top of the second reversed (R_2) section (Anderson, 1978). One Prineville flow, probably an N_2 flow, occurring near the top of the Low Mg Grande Ronde Basalt, has been found in the exploratory hole at Old Maid Flat. The Prineville chemical-type flows probably originated near Prineville, where 13 flows are exposed (Uppuluri, 1974), and spread northward and westward, onlapping and interfingering with flows of Low Mg Grande Ronde Basalt. Prineville flows have not been found in the Willamette Valley, but the lower part of the Grande Ronde section is not exposed in the Portland area, and few chemical analyses have been made on CRB from other parts of the valley. Prineville flows are not known to occur in the Bull Run Watershed (B. F. Vogt, personal communication) or in the Columbia River Gorge (Beeson and others, 1976).

In the Waverly Heights area near Milwaukie, Oregon, two flows which have been informally designated the Waverly flows (Beeson and others, 1976) occur between the High Mg and the Low Mg Grande Ronde Basalt flows. They are localized by structural and/or erosional lows which existed at that time. Chemically, they are very similar to the Low K_2O Grande Ronde Flows that occur at or very near this same stratigraphic horizon in the Pasco Basin (Ledgerwood, 1978) and along the Snake River in Washington. The Waverly flows are also similar chemically to the older Imnaha Basalts.

The Frenchman Springs Member of the Wanapum Basalt is widespread in the CRB occurrences in western Oregon. It is not present along some structural highs such as the Portland

Hills anticline, either because it was excluded by developing structures or because it has since been eroded. In the Columbia Plateau, Grande Ronde and Wanapum Basalts are separated by the Vantage interbed; in western Oregon, this same contact is marked by a distinctive weathering surface and an interbed of carbonaceous material. Interbeds occur between other CRB flows in western Oregon, but because the Vantage interbed is characterized by deep weathering, structural deformation, and sedimentary deposits, it must represent a longer time interval. Tree molds and carbonaceous material are common at this boundary. The first two Frenchman Springs flows above the interbed contain plagioclase megaphenocrysts which aid in positive stratigraphic determination.

The Priest Rapids Member occurs in the Bull Run Watershed (B. F. Vogt, personal communication) and at Crown Point on the Columbia River as one or possibly two intracanyon flows. Priest Rapids flows have not been found in any other location in western Oregon.

The Pomona Member of the Saddle Mountains Basalt occurs along the lower Columbia River of Oregon and Washington. This flow probably traversed the Cascade Range as an intracanyon flow whose course is yet to be determined. Pomona flows have not been found in the Cascade Range or in the Portland area.

III. STRATIGRAPHY AND STRUCTURE OF THE COLUMBIA RIVER BASALT IN REGIONS WITHIN THE CASCADE RANGE

A. Hood River Area

The Hood River Valley is located 100 km east of Portland and extends north about 26 km from the northern flank of Mount Hood to the City of Hood River on the Columbia River (Figure I-1). The valley floor is nearly flat, sloping less than one degree to the north, and is overlain by glacial outwash and stream deposits at least three meters thick. The valley is flanked on the east and west by steep-sided ridges.

The entire valley and surrounding hills are underlain by CRB; however, exposures are limited to stream channels and steep hillsides. The CRB basalts have undergone weathering and a thick soil covers all but the steepest slopes. Hill-side exposures are usually the result of excavations.

The valley is interrupted in its approximate center by Middle Mountain, an asymmetric hill of northeast dipping basalt.

The Hood River flows northeast along the west border of the valley with a gradient of 1 degree, providing the only outcrops of CRB from north to south within the valley. Two levels of terraces border the Hood River; the lower terraces often mark the end of an exposure of the basalts, though CRB may be found further up slope. The higher terrace consists entirely of stream-deposited glacial outwash.

Stratigraphy and structure

The Yakima Basalt Subgroup of the Columbia River Basalt Group exposed in the Hood River Valley consists of two low Mg R_2 flows, five Low Mg N_2 flows, and four High MgO flows of the

Grande Ronde Basalt formation and six Frenchman Springs flows and one Priest Rapids flow of the Wanapum Basalt formation. One complete section of the Wanapum Basalt underlain by two (?) High Mg flows and one Low Mg flow was sampled along Snakehead Creek in the Neal Creek drainage and analyzed for trace elements. Four High Mg flows overlain by a thin (≤ 3 m) eroded section of a Frenchman Springs flow and a thin (~ 10 m) cap of Priest Rapids at the junction of Lake Branch Creek and the West Fork Hood River was measured and analyzed. Stratigraphic sections of more than three flows in contact elsewhere in the valley were not analyzed.

The Grande Ronde Basalt is exposed along the Hood River and its tributaries west of Middle Mountain. Frenchman Springs basalt is exposed directly north of Middle Mountain along Hood River.

The entire section of Yakima Basalt in the Hood River Valley is exposed on Middle Mountain except for the Priest Rapids Member. In the southwest corner of the valley the Priest Rapids flow probably occurs as an intracanyon flow.

The Hood River area is gently folded with a general dip to the east. Frenchman Springs flows crop out at an elevation of 1600 ft in the southwest corner of the valley and at 400 ft north of Middle Mountain. Younger Pliocene (?) basalts overlie the Frenchman Springs basalt from Tucker Bridge (2N/10E-5) to the Columbia River. Frenchman Springs basalt is exposed at the mouth of Hood River.

An anticline trends north through the southwest corner of the Hood River Valley between Lake Branch Creek and the West

Fork Hood River. Another anticline trends east across the southern part of Middle Mountain and plunges to the east. No dip in the Yakima Basalt is evident along Green Point Creek.

Two main structural trends occur within the area - NE to E trending normal (?) faults and folds and NW trending faults and dikes. Two NE trending faults were mapped, one in the structurally complex Neal Creek drainage and one in the southwest corner of the Hood River Valley. South of Snakehead Creek, a breccia zone approximately 100 m wide marks a fault zone with a throw of about 150 m up to the south. Several small faults occur just north of and parallel to this breccia zone. The NE trending fault in the southwest corner is not manifest but is indicated by a stratigraphic offset in the Yakima Basalt with a throw of about 70 m down to the south.

Along the West Fork Hood River, Frenchman Springs flows are exposed at an elevation of 1350 ft (1N/9E-28); the base of the Frenchman Springs Member is not exposed. Less than one km to the north, the Vantage horizon at the base of the Frenchman Springs Member is exposed along Lake Branch Creek at an elevation of 1550 ft (1N/9E-28b).

Three small olivine basalt dikes (~1 m wide) were mapped in the High Mg Grande Ronde Basalt (1N/9E-22 & 28). They trend N10W, N15W, and N45W. A series of small faults trending N10W to N55W occur along the Hood River north of Green Point Creek. The faults have about one m wide breccia zones. The faults all occur within the Low Mg Grande Ronde Basalt section. Because Low Mg Grande Ronde flows are indistinguishable from one another, determination of direction and magnitude

of movement was not possible. Due to the narrow width of the breccia zones and the generally small amount of shearing in adjacent flows, the offset was probably only a few m. One fault near Ditch Creek clearly displaced a flow 2 m down to the south.

The Hood River displays two prominent bends which are fault associated, one in (2N/9E-36d) and the other in (2N/10E-31b). In Sec. 36 displacement is visible along the fault on the east side of the river but not on the west. The dip is to the north. Not enough faulted flows were exposed to determine throw or direction of movement; however, a two m thick breccia zone occurs along the fault in Sec. 31. Direction of movement was difficult to determine but a slickenside trending N10W and dipping 52S was measured.

Between Dee (1N/10E-7) and the dam on the Hood River (2N/10E-31) a repeated exposure of two Low Mg R₂ Grande Ronde flows and three overlying Low Mg N₂ Grande Ronde flows necessitates a fault down to the southeast through Middle Mountain. The Vantage horizon is exposed on Middle Mountain at about 1600 ft elevation (1N/10E-18) and to the northeast at about elevation 2400 ft (1N/10E-8) indicating a displacement of 280 m. The fault passes between the two prominent fault-controlled river bends discussed above. The Low Mg N₂ Grande Ronde flows exposed northeast of the fault are about 230 m thick; the Low Mg N₂ Grande Ronde section to the southwest is about 130 m. thick. The increased thickness and extensive palagonite breccia on at least two Low Mg N₂ Grande Ronde flows northeast of the fault suggest that the area may have been a topographic and/or structural

low when these lavas entered the Hood River Valley.

On the east side of Hood River Valley a breccia zone about 150 m wide marks the location of the Hood River fault which trends N5-15W. The throw is at least 270 m down to the southwest. The valley is cut by several NW trending faults, all down to the southwest. Hood River Valley does not appear to be a graben. A cross-section through Middle Mountain shows several tilted blocks, dipping to the east and separated by faults. The Frenchman Springs flows crop out at approximately the same elevation on the west side of Middle Mountain as they do on the east side of the Hood River fault. Although unmapped, it is believed that a fault trends approximately east-west along the south edge of Middle Mountain and is down to the south. Highly fractured basalt is exposed along the south side of Middle Mountain. Another fault may pass under Blue Ridge on the west side of the upper Hood River Valley. Either, at least 300 m of Yakima Basalt has been eroded from the upper valley, or, it has been down-faulted with respect to Middle Mountain.

Geologic History

The area which is now the Hood River Valley was a topographic low for most or all of the time the Grande Ronde flows were deposited. The lowest basalt member exposed, Low Mg (R_2) Grande Ronde, has a thick palagonite flow top, indicating contact with deep water while the flow was molten. Palagonite breccia is mixed with the flow. Beneath the palagonite, large vesicles (~10 cm in diameter) and vesicle columns fill the top 3 m of the flow. The flow may have been invasive--one

which dives under loose sediments carrying water and sediments on top.

The Low Mg (N_2) and High Mg (N_2) Grande Ronde flows also have flow top palagonite exposed along the Hood River. The area was probably a closed basin without exterior drainage or at least with disrupted drainage.

The thicker section of Low Mg (N_2) Grande Ronde Basalts found north of the major fault through Middle Mountain likely were ponded in a confining topographic low. Because of poor exposures, it is difficult to determine if the individual flows are thicker or if there is a greater number of Low Mg (N_2) Grande Ronde flows in this area. The probability that valleys existed at the time the Low Mg flows were being extruded is supported by the existence of an intracanyon flow exposed at the junction of West and Middle Forks Hood River.

The High Mg flows have a fairly constant thickness indicating low relief at the time of extrusion except in the southwest corner of the area. Along Lake Branch Creek four High Mg Grande Ronde flows are mapped. Because only the top two m of the lowest exposed High MgO Grande Ronde flows are visible, the High Mg Grande Ronde thickness is unknown. Palagonite flow-top breccia covers the entire exposure of the lowest High Mg flow from Lake Branch Creek to Mohr Park on the West Fork Hood River. The palagonite and increased number of High Mg flows indicates the area was a structural low during the extrusion of the High Mg Grande Ronde flows.

After the High Mg Grande Ronde flows transgressed the area, a period of non-deposition ensued at around 15 my BP

as indicated by the Vantage horizon.

Folding began during the accumulation of the Grande Ronde Basalt and continued, accompanied by faulting, during the deposition of Frenchman Springs flows. The NE-SW trending fault which passes between Lake Branch Creek and the West Fork Hood River occurred after the Frenchman Springs basalt had been deposited. The Frenchman Springs flows were eroded from the structural high created by the fault in the area north of Lake Branch Creek. The Priest Rapids Basalt flowed into the area filling the structural low to the south of the fault and lapped onto the up-faulted eroded Frenchman Springs basalt to the north. The Priest Rapids flow attains a thickness of about 60 m south of the fault. Further west along Lake Branch Creek the Priest Rapids flow overlies about 3 m of pillow basalt.

The NE trending fault in the Neal Creek drainage displays ~10 m thick ridges of cemented breccia which are subparallel to the trend of the Hood River fault. This fault may have been associated with deep shearing which allowed hydrothermal fluids to escape upward into and cement the breccia.

Lake Branch Creek and the West Fork Hood River are separated by a late Pliocene to early Pleistocene andesite flow (Wise, 1969). The andesite laps against High Mg Grande Ronde Basalts on the northeast and against Frenchman Springs and Priest Rapids flows on the east at about the same elevation. This indicates that the NE trending fault through Lake Branch Creek-West Fork Hood River occurred prior to the andesite flow.

The NW trending faults occurred after the Priest Rapids flows were extruded and therefore are younger than the NE trending faults. Some faults appear to be contemporaneous with folding because the faults parallel the strike.

B. Bull Run Watershed Area

Introduction

The Bull Run Watershed lies within the eastern portions of Multnomah and Clackamas Counties and covers more than 390 km² (Figure I-1).

Lolo Pass and Mount Hood are to the east; the Columbia River Gorge, Larch Mountain, and the Benson Plateau are to the north; the town of Sandy and the Sandy River are to the west; and the communities of Alder Creek, Brightwood, Wemme, and Zigzag lie to the south. Interstate 80N passes the area on the north, U. S. Highway 26 to the south.

Access to the watershed is by permit only, and locked gates are at each of the entrances. Major approaches are from Sandy on Forest Service Road S-10, from Brightwood on Road S-224, and from Zigzag and Lolo Pass on Road N-12.

The maximum elevation of 4,600 ft is on Hiyu Mountain at the eastern boundary of the watershed. The elevation decreases toward the west; the lowest elevation, less than 500 ft is at the Sandy entrance.

The major stream in the area is the Bull Run River, which flows to the north and then to the southwest from its headwaters at Bull Run Lake. Several smaller streams in the southeast portion of the watershed join and flow into Blazed Alder, which, in turn, flows north into Bull Run River; other streams

flow into this river from the east, north and south. Reservoirs No. 1 and 2 are formed by dams on the Bull Run River.

Basalt of the Columbia River Group undoubtedly underlies all of the watershed but is covered by younger geologic units and unconsolidated surficial deposits. Because stream erosion has cut through the younger material, all basalt exposures occur in proximity to rivers and streams. The highest exposure of CRB occurs at an elevation of 3100 ft northwest of Nanny Creek. Lowest exposure is at an elevation of 500 ft along the Bull Run River.

Basalt occurs along at least 80 km of the major streams, but reservoir water covers at least 10 percent of these exposures. In steep-gradient bedrock streams, exposure is often nearly continuous, but in low-gradient streams, percentage of exposure is often much less. Along roads, exposure is generally less than 10 percent.

The base of the CRB is not exposed in the watershed. The deepest part of the basalt section is exposed in Blazed Alder Creek. About 18 km to the north, outside of the watershed, CRB unconformably overlies rocks of the Eagle Creek formation.

Beaulieu (1974) maps overlying units as the Rhododendron formation in the western portion of the watershed and as Pliocene and Quaternary volcanic rocks in the eastern section. During this study, isolated patches of Rhododendron were noted but not mapped further to the east along the Bull Run River.

CRB was mapped along the Bull Run River and Blazed Alder Creek by Wells and Peck (1961) and Peck and others (1964);

more detailed mapping was done by Beaulieu (1974). Engineering studies include those by Dames and Moore (1972a, b; 1973), Patterson (1973), Ruff (1957), Schlicker (1961), Shannon and Wilson, Inc., (1958a, b; 1961, 1963, 1965, 1973), and Stevens and Thompson, Inc. (1957, 1965). A soils survey of the area was conducted by Stevens (1964).

Structure and stratigraphy

Grande Ronde Basalt flows, with a total thickness of about 150 m and Wanapum Basalt flows, with a total thickness of 137 m occur within the watershed. The basal exposed flow is a Log Mg (R_2) flow found in Blazed Alder Creek. Above it lies approximately 95 m of Low Mg (N_2) basalt comprising at least four and possibly more separate flows. These flows are difficult to differentiate either in the field or by trace element geochemistry. Rocks from these flows have extremely fine-grained textures; one of the N_2 flows is characterized by small, clear, glassy plagioclase phenocrysts. All of the flows in this group have the same kind of distinctive jointing: a small colonnade and a proportionally much larger entablature.

Two High Mg Grande Ronde flows with a total thickness of about 43 m lie above the Low Mg flows. These rocks are coarser in texture than the Low Mg flows. Rocks from the top flow are also quite open in texture. The tops of both of these flows, but particularly the upper flow, are deeply weathered. The lowest flow of the two is characterized by a blocky colonnade and multiple layers of sheet vesicles. The upper flow is characterized by well-developed columns,

sections of which display, platy jointing. A thin soil zone, and, in one place, a 9 m thick interbed separates the two flows.

The Vantage interbed lies between the Grande Ronde and overlying Wanapum Basalt flows. In the Bull Run syncline, the Vantage is composed of sandy and silty sediments with local soil zones and carbonized wood. The maximum thickness is 1.5 m at Log Creek. In the Bull Run syncline, the base of the Wanapum flow above the Vantage often has up to 9 m of pillow basalt; in the anticline, the contact is flow-on-flow with no evidence of pillows, soil or carbonized wood.

Above the Vantage horizon are the Wanapum flows: six N_2 Frenchman Springs flows and one (or possibly two) R_3 Priest Rapids intracanyon flows totaling at least 137 m. The Frenchman Springs rocks are coarse in texture; three of the six flows, the first, second and fourth, have large, glassy, plagioclase phenocrysts (phyric). The third flow has occasional plagioclase phenocrysts (rarely phyric); the fifth and sixth flows are aphyric. All of these flows display well-developed colonnades and no entablatures. A red clay zone occurs locally between the two upper aphyric Frenchman Springs flows.

The Priest Rapids intracanyon flow displays reversed polarity and, where exposed along the Bull Run River, is characterized by at least 100 m of bedded palagonite, an 8 m thick colonnade and a 60 m thick entablature. Where it overflowed the canyon, the Priest Rapids flow is 12 m thick and forms massive blocky columns. This thinner part of the flow may in fact be a separate Priest Rapids flow, but poor exposures make

it impossible to locate a contact.

The dominant structure is a NE trending (roughly N60E) syncline and anticline. A N60E trending, 12 degree SE dipping, thrust fault with at least 180 m of vertical offset occurs on the north limb of the anticline. The entire area displays fractures that trend in sundry directions, but particularly with trends of N10-20W, and N55-65W. The entire structure has a slight regional dip of about 2 degrees to the west-southwest.

The most northerly fold is a N60E trending syncline in which the Bull Run River flows to the southwest. The axis of the syncline lies slightly to the south of the river. The development and persistence of this syncline during the Miocene, are shown by pillows that occur locally at the base of the highest High Mg Grande Ronde flow; a 9 m interbed between the two High Mg Grande Ronde flows near the main dam; a less than 30 cm thick interbed between the two High Mg Grande Ronde flows at North Fork; a soil zone of the Vantage horizon; and pillows at the lowest Wanapum flow. The intracanyon Priest Rapids flow has been found only in the syncline and its periphery.

The NE trending, thrust-faulted anticline parallels the syncline and lies south-southeast of it. It is defined by elevations and attitudes of various CRB flows, and is characterized by the absence of pillows, interbeds, and the Priest Rapids intracanyon flow. A Wanapum flow-top near the county line on Road S-154 is deeply weathered -- more than the corresponding flow-top in the syncline -- indicating a Miocene

topographic high corresponding to the upper portions of the anticline. The syncline and anticline are believed to extend northeastward through Hood River Valley, where they are now broken by N-NW trending faults, to the Columbia River Gorge where they appear as the Mosier syncline and Ortley anticline.

The complete High and Low Mg Grande Ronde section does not occur in the upper reaches of Blazed Alder Creek. In the northern portion of this creek, at least four N_2 Low Mg flows overlie the R_2 Low Mg reversed flow; upstream in the southern part, High Mg flows are missing. Apparently a structure was developing in Bull Run during early CRB time. After the reverse flow entered the area, a topographic high began to develop where the present-day abbreviated section occurs. A slight relative subsidence both north and south of the high developed. The N_2 Low Mg basalt flowed around the high which was eventually covered by later High Mg flows. Gravity and magnetic maps show anomalies roughly corresponding to this abbreviated section.

The ancient high delineated by the abbreviated section in Blazed Alder Creek was evidently a zone of weakness, because as folds developed, the anticline failed at the margin of the high, producing the thrust fault with vertical offset of 180 m and net slip of at least 900 m.

The best exposure of the thrust fault is just downstream from the confluence of Boulder and Blazed Alder Creeks, where the fault plane is exposed at stream level. Below the thrust plane about 2 m of the underlying basalt flow is coarsely brecciated. Extremely finely-ground tectonic breccia occurs

for about 10 m above the thrust plane.

Because of this thrust fault, CRB occurs at higher elevations and more extensively in the southeastern section of Bull Run than has been previously mapped. Highest exposure is at an elevation of 3100 ft. All the CRB in the forward section of the thrust has been disturbed, even if not actually brecciated, and therefore does not produce good outcrops in these areas. Although dense and coherent, a very minor amount of silicification was observed in the breccia of the upper thrust plate.

Linear ridges of tectonic breccia with trends of about N10-20W were observed in Blazed Alder Creek in the lower plate over which thrusting occurred. A smaller ridge also lies within the thrust zone along Boulder Creek. The linear ridges may represent an older, pre-thrust zone of weakness that brecciated during the thrusting, or both zones may be due to later fracturing which cut across the thrust area.

A vertical fault occurs at North Fork quarry on Road S-10. The fault trends roughly N20W, but horizontal slickensides within the foot-wide fault zone trend in two directions; N30E and N30W. This fault, because of poor exposures, could not be traced for any significant distance.

Numerous fractures occur in the CRB in Bull Run. Although no attempt was made to do a statistical analysis of fracture trends, certain dominant fracture trends are apparent throughout the area. Some fractures are merely breaks in the basalt that cut through regular jointing, and in some cases, several flows; while other fractures are brecciated or contain

brecciated zones.

A major fracture trend is N10-20W. Fractures with this trend are found throughout the watershed, but notable concentrations occur along the north-flowing sections of Blazed Alder Creek and Bull Run River and their tributaries. Brecciated zones with this trend also occur near the thrust fault. Along the Bull Run River just upstream from Log Creek, a large brecciated zone with this trend crops out. Aerial photographs and SLAR imagery show a linear with this identical trend that extends north along Blazed Alder Creek and Bull Run River, cuts through the glacial cirque on Falls Creek, and continues up Tanner Creek to the Columbia Gorge and into Washington State. A dike of Boring basalt with this same trend crops out along Blazed Alder Creek before curving slightly and disappearing in a side stream. At one point in Blazed Alder Creek, this dike cuts an older N55W trending breccia zone, another frequently occurring fracture trend in Bull Run.

The N55W trend is found throughout the area but seems to occur most frequently near the thrust fault. Upstream from the thrust fault, N20-55W fractures often contain breccia; these fractures, however, decrease in frequency with distance from the fault.

Other less common fracture trends include N-S, N20E and N80W. Fractures frequently affect patterns of mass wasting and erosion. For example, at the base of the falls at Falls Creek and along Road S-10 on the east side of Falls Creek, massive failure of extremely large blocks of Wanapum Basalt has occurred along N15W trends.

Fractures often control the directions in which streams flow in Bull Run. At one point Blazed Alder Creek flows in a N20W trend and then makes an abrupt turn and follows a N55W fracture. These fractures seem to be most influential in controlling stream direction when the stream is flowing across the regional anticline-syncline structure.

The path of an intracanyon flow of reversed Priest Rapids basalt has been traced from east to west through the watershed. The greatest measured thickness at any one place is 177 m but that thickness was not measured from the absolute bottom of the ancestral channel. The most easterly exposure occurs in the eastern portion of the watershed between Log and Otter Creeks. The intracanyon flow forms a mound on the bench west of Otter Creek and then is exposed by the Bull Run River at the point where the river changes directions from north to west. Again, on the north bench overlooking the river, the intracanyon flow forms large mounds of basalt. The next mapped exposure to the west is in a quarry on the south side of the Bull Run River. Further west, the flow is again cut by the Bull Run River; it then forms a ridge in a clearcut north of the river. It is last exposed in North Fork. From there, it is presumed to have flowed to Crown Point in the Columbia Gorge. It is correlated with the Crown Point intracanyon flow by similar chemistry, magnetic polarity, morphology and flow characteristics, and large amounts of bedded palagonite. Crown Point is on trend and geographically close to the intracanyon flow in Bull Run.

The intracanyon flow in Bull Run is characterized by a

100 m thick palagonite sequence which in places has been waterworked. Foreset beds indicate flow directions to the west and southwest. In other places, the palagonite is unsorted and contains large blocks of basalt up to 3 m in diameter. The flow has a relatively thin colonnade whose thickness varies from area to area but which was measured at 7.6 m along the Bull Run River. The entablature forms distinctive, flat-topped mounds which contrast with the CRB benches surrounding it.

Another distinguishing characteristic of this flow is its somewhat ambiguous remnant magnetic polarity. At some places, the flow produces a normal reading on the fluxgate magnetometer, elsewhere it is reversed. Always, however, a reversed polarity is shown at the top of the section.

The present-day river does not exactly follow the course of the ancestral river through which the intracanyon flow moved. Where the present-day river breaks into the old channel, it reveals an almost vertical, smooth, basaltic canyon wall with a U-shaped valley floor. A very small section of the ancestral valley floor is exposed in the Bull Run River and contains relatively poorly sorted, rounded to subangular basaltic pebbles, cobbles, and occasional boulders ranging in diameter from less than 1 cm to over 1.5 m.

The Bull Run Watershed region was being deformed in earliest CRB time as shown by the abbreviated section in Blazed Alder Creek. The base of the CRB is not exposed in this area to record possible earlier deformation. By High Mg Grande Ronde time, the NE trending syncline and anticline were already

developing, as evidenced by the local interbed and pillows between the two High Mg flows in the syncline.

During Vantage time, as elsewhere on the Columbia Plateau, no basalt flows occurred. Instead, saprolite and soil zones developed and drainage systems evolved. When the Frenchman Springs flows entered the area, pillows formed in the syncline at the base of the earliest Frenchman flow.

Between Frenchman Springs and Priest Rapids time, a major east-west river drainage system formed. It was through this 180 m deep canyon that the Priest Rapids intracanyon flow entered the area from the east and flowed west-northwest to Crown Point in the present-day Columbia River Gorge.

Sometime during Wanapum time, and probably before Priest Rapids time, thrusting occurred on the northwest limb of the anticline. Phyric Frenchman Springs flows but not Priest Rapids flows have yet been found on the upper thrust plate. Vertical fracturing accompanied the thrusting, with most intense fracturing nearest the thrust zone.

The CRB surface was eventually covered by younger volcanic and volcanoclastic rocks. Fracturing undoubtedly continued to occur, and erosion along these fractures eventually re-exposed CRB. The most recent fracturing appears to be the N10-20W trend that is visible on SLAR imagery and air photos. Boring dikes with this same trend indicate that east-west extension accompanied or occurred after the north-south compression of the region.

C. Salmon River Area

Introduction

Located between the Bull Run River and the Clackamas River drainages is a series of small isolated outcrops of CRB which cover approximately 25 km^2 within a map area of about 250 km^2 . Relationships between these exposures are difficult to determine because of structural complexities within some of the areas and because of rather extensive areas of intervening younger Rhododendron Formation and sedimentary valley fill.

Structure and stratigraphy

Like other areas previously discussed, the Columbia River Basalt Group exposed in this area is assigned to the Yakima Basalt Subgroup. As in nearly all exposures of CRB in western Oregon, the basalts in this region are mapped as Grande Ronde Basalt and Wanapum Basalt. The base of the basalt is not exposed in this region while the upper contact is unconformable with the Rhododendron Formation. The Wanapum Basalt is represented by two to four flows with an approximate total thickness of 75 m. Although a combination of intricate structure, poor accessibility, and discontinuous outcrops precludes ascertaining the number of flows in the Grande Ronde Basalt, certain relationships can be determined. Two High Mg chemical type flows occupy the upper part of the formation and attain a thickness of about 70 m. The low Mg chemical type possesses an unknown number of flows but can be subdivided into the CRB N_2 and R_2 paleomagnetic intervals that are about 160 m and at least 50 m thick, respectively.

Traversing the area is the N30W trending Salmon River fault that separates the Columbia Plateau type structural trends from those of the Portland Hills-Brothers fault zone. This N30W trending fault displays a vertical displacement of about 145 m down to the west with a moderate amount of associated tectonic breccia near Arrah Wana. However, it is believed that this apparent displacement is the result of offset of some pre-existing structure by right lateral movement because (a) near the Salmon River opposite sides of the fault lack significant vertical displacement, and (b) along this trend in the Upper Salmon River the fault displays right lateral displacement. Folds to the east of this fault trend generally N60E with the Bull Run-Ortley anticline terminating at the Salmon River fault in the vicinity of Brightwood. The upper Salmon River area is a broad asymmetric anticline with the same trend and a possible connection with the outcrops at Robinhood quarry. West of the Salmon River fault a small segment of a minor anticline occurs in the Alder Creek-Sandy River area that strikes N75W similar to the folds of the Portland Hills and is the only fold mapped in the Clackamas River drainage.

The intervening synclines are not exposed except for a small area of hyaloclastic material that may mark the axis of a syncline near the confluence of the South Fork and Salmon River. The location of other synclinal axes are based on other lines of evidence and are discussed below.

Faulting has severely complicated stratigraphic relationships in all areas except Alder Creek and the upper Salmon

River. The Salmon River anticline is, however, down faulted about 75 m on the north by a NE trending normal fault.

The region between Arrah Wanna and the U. S. Highway 26 bridge crossing of the Salmon River has been deformed by several faults, all in close proximity to one another, but with different trends. A short segment of a thrust fault southwest of Arrah Wanna has displaced the basalt stratigraphically about 180 m. Associated tectonic breccias exceed 100 m in thickness; however, the thrust plane is not exposed. This fault has roughly the same trend and displacement as the Promontory Park fault in the Clackamas River and may well connect with it. The Salmon River fault is exposed an elevation of 2400 ft on Arrah Wanna trail and is responsible for the disappearance of the basalt section to the west at this locality. Displacement along this fault is not known. A N5-10W trending fault has been mapped passing near three quarries in the basalt. It is represented in the quarry in the Salmon River by a 30 m wide breccia zone and at the two quarries north of the Sandy River, near North Boulder Creek, as a much broader, less easily defined structure that has displaced the western quarry down with respect to the upper quarry.

Geologic History

The history of this region is not easily interpreted because of the lack of continuity between outcrops and the lack of exposed synclinal areas; however, certain events can be deduced. The NE trending folds are known to have formed during the incursion of the basalts because of the on-lap against anticlines of some flows and the hyaloclastic and pillow

deposits found only in structurally depressed areas. These features are not observed in this area but occur in the eastward extension of the folds. Similarly the Arrah Wanna thrust fault probably formed during the later stages of the deformational episode that produced the folds as is the case with the Bull Run thrust and some of the thrusts on the Columbia Plateau.

The youngest tectonic event to have occurred is the Salmon River Fault. When projected to the south, the fault apparently has displaced Pliestocene glacial features as seen on air photos and SLAR imagery near Tumbling Creek, a tributary of the upper Salmon River.

D. Clackamas River Area

Introduction

Columbia River Basalt is exposed in the Clackamas River area within deeply cut canyons of an extensive drainage system that covers more than 700 km². The basalt flows form impressive cliffs with occasional waterfalls within this area some 73 km southwest of Mt. Hood (Figure I-1). The eastern part of the area is characterized by the constructional volcanic terrain of the high Cascade Range while the west is dominated by more maturely dissected western Cascade topography.

The basalts of the Columbia River Group are overlain, underlain and interfingering with volcanic and volcanoclastic rocks of local Cascadian origin. The Clackamas River valley in the vicinity of Ripplebrook Ranger Station is the approximate southern limit of these basalts, where they lap against

a pre-existing topographic high formed by the Little Butte Volcanic Series. Successive flows of CRB filled relatively smooth terrain to the north of the highland and encroached progressively deeper into the foothill valleys. Sediment and distal volcanic facies in turn covered the southern perimeter of the basalt during the interflow periods to form a number of interbeds up to 46 m thick. Similarly, deposits of the Sardine Formation rapidly buried the basalt after the last flow entered the area.

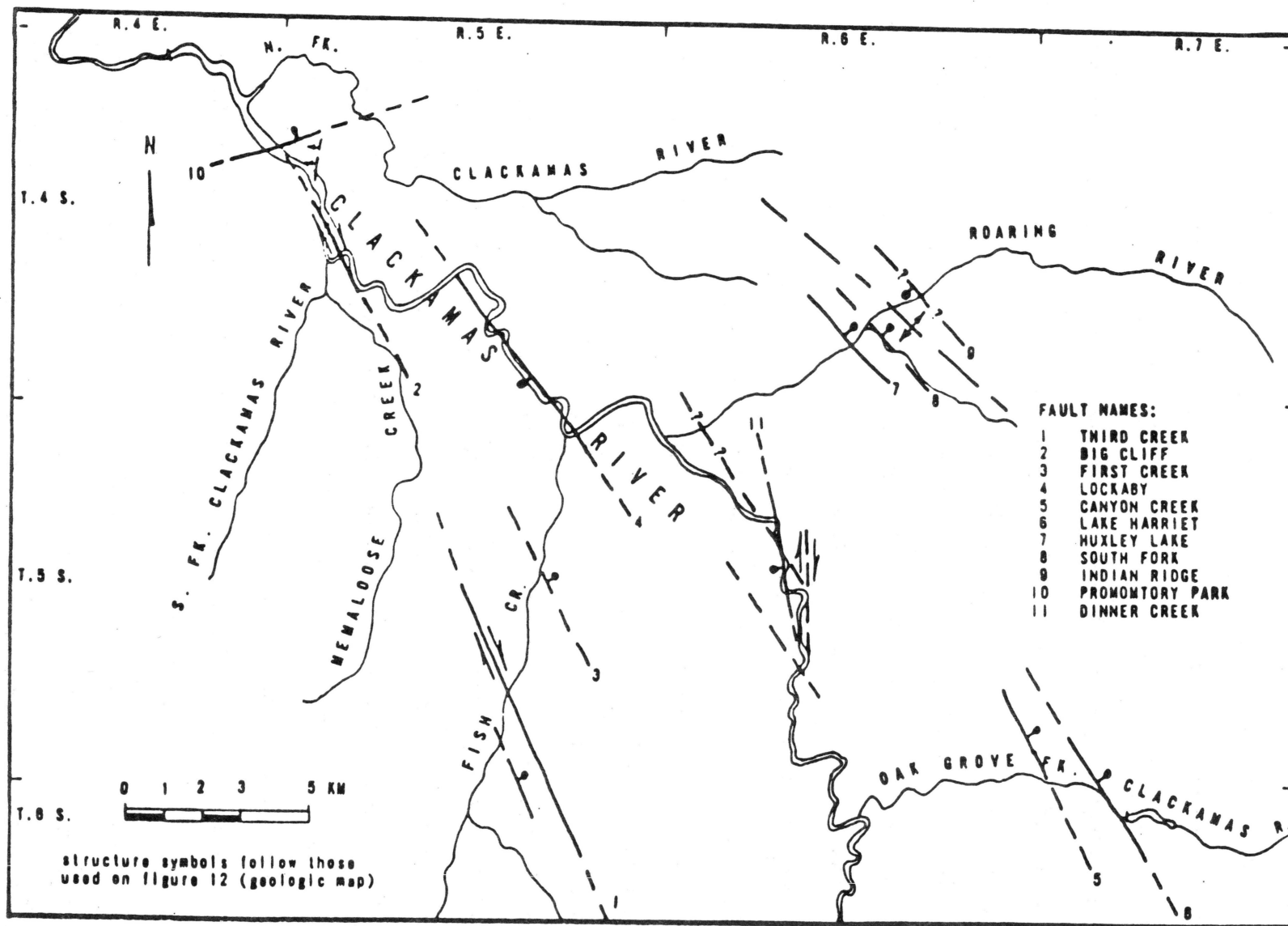
Deep incision by the Clackamas River and its tributaries has exposed more than 550 m of CRB in this area. The complete basalt sequence can be seen in the cliffs forming the canyon walls in the vicinity of Three Lynx.

Structure and stratigraphy

The general geometry of the CRB in the Clackamas River area is a broad slab that is gently inclined toward the northwest. Dips over most of the area are less than 10 degrees, in part accounting for the extensive exposures that occur between Lake Harriet on the east and North Fork Reservoir on the west.

The structure of the area consists predominantly of northwest-trending faults that cut the gently tilted basalt in an en echelon pattern (Figure III-1), as is reflected in the drainage pattern of the northwest flowing Clackamas River. NE and N-S trending faults also occur, but are in the minority. Some faults are predominantly strike-slip and others are predominantly dip-slip; however, all fault planes are vertical or near-vertical. Moreover, there is an absence of

Figure III-1. Tectonic Map of the Clackamas River Area



drag-folds associated with these faults.

The faults in the northeast part of the area constitute the deformed boundary of an otherwise relatively unwarped body of basalt. Dips in the Roaring River and Lake Harriet areas range between 20 and 40 degrees adjacent to faults with offsets of 200 m or more. The attitudes of flows observed within the Roaring River drainage define a northwest trending anticline with a crest that appears to be down-dropped as a block or blocks along the Huxley Lake, South Fork and the Indian Ridge faults. The Lake Harriet attitudes appear to reflect the asymmetrical east limb of the "Clackamas Anticline" of Peck and others (1964), or possibly a monoclinial fold down to the east. Faults over the rest of the area are not associated with steeply dipping flows, in distinct contrast with those on the northeast perimeter of the area. The Lockaby fault, for example, has more than 100 m of vertical offset along a very narrowly defined vertical fault plane. Flows adjacent to it are relatively undisturbed by this movement between NW trending en echelon faults. However, this simple picture is complicated by strike-slip movement along at least two of these faults.

Right lateral faults occur at Big Cliff and near Third Creek, a tributary of Fish Creek. Both of these faults define prominent air photo linears that are clearly evident within rocks of the overlying Sardine Formation. An apparent normal displacement of 15 to 30 m occurs across the Third Creek fault, but no detectible displacement can be seen at Big Cliff. The amount of horizontal offset on either of

these faults cannot be deduced based upon existing data. However, many lesser fractures with horizontal slickensides can be seen throughout the area, suggesting that the collective offset on all such fractures and faults could be substantial.

The shallow dips exposed in the Clackamas River canyon are only slightly greater than the gradient of the river itself, so that abrupt changes in the stratigraphy along the river are nearly always the result of faulting rather than folding. Both the disappearance of the top of the CRB at North Fork Reservoir and the appearance of the base of the section near Three Lynx are, in part, the result of dip-slip movements on normal faults rather than dip alone. The net effect of this faulting and particularly that at North Fork Reservoir is that one does not traverse the entire CRB sequence from northwest to southeast through the Clackamas River canyon. Less than half of the 17 flows are exposed at highway level across the area due to faulting. Thus, an excursion through the Clackamas River canyon is an experience limited to the lower half of the section.

The stratigraphy of the Clackamas River area consists of Wanapum and Grande Ronde Basalt. Only the Frenchman Springs Member has thus far been identified within the former of these two formations. The Grande Ronde stratigraphy is very similar to that observed elsewhere, except that interbedded sedimentary units are more common and the distinctive Prineville chemical type is present.

The Grande Ronde Basalt in the Clackamas River area consists of at least eleven flows and five or more interbeds with a combined thickness of more than 425 m (Figure III-2). Two

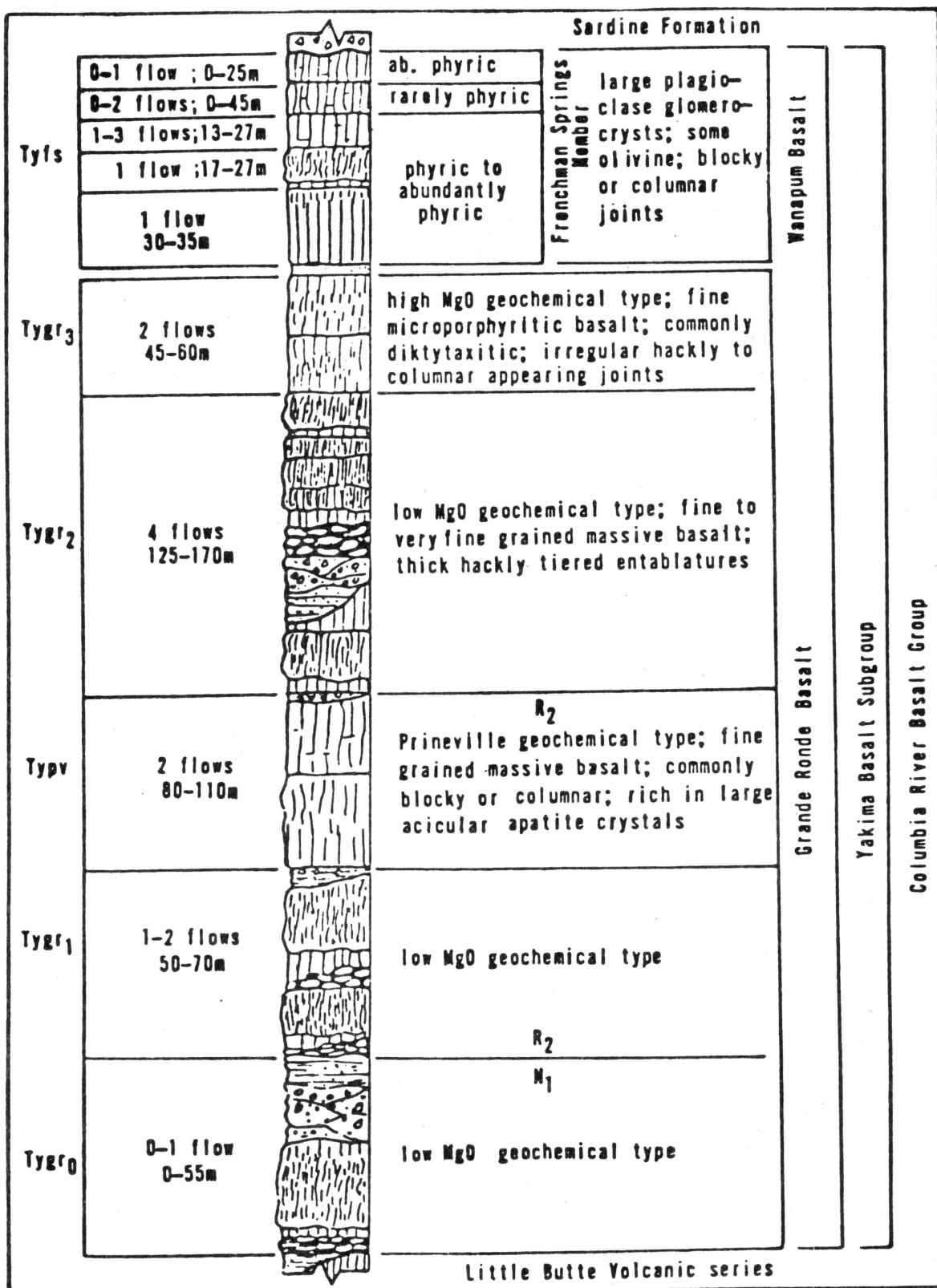


Figure III-2. Generalized Stratigraphic Column for Columbia River Basalt in the Clackamas River Area

High Mg flows occur at the top of the formation. The remainder of the Grande Ronde Basalt consists of flows of the Low Mg geochemical type separated into two approximately equal parts by two intercalated flows of Prineville chemical type. There are two paleomagnetic reversal events within the Clackamas River section that divide it into three polarity intervals. These are considered to be equivalent to the R_2/N_1 and N_2/R_2 paleomagnetic horizons recognized by previous workers elsewhere in the Columbia Plateau (Figure II-2). The N_2/R_2 paleomagnetic break coincides with the Low Mg/Prineville geochemical break, making this a well-defined stratigraphic horizon.

The Prineville flows are distinctive from the standpoint of both trace element and major oxide geochemistry. They also differ from other flows within the Grande Ronde section from the standpoint of petrography and certain physical characteristics.

The Prineville basalt type was first recognized and described by Uppuluri (1973, 1974) from exposures near Prineville Dam in central Oregon. Other flows of this chemical type were also observed by Nathan and Fruchter (1974) at Buck Creek and Tygh Ridge about 47 km north-northeast of the type locality, where they are intercalated with flows of the Low Mg Grande Ronde geochemical type. Wright, and others (1973) and Brock and Grolier (1973) noted the anomalously high P_2O_5 concentrations in these flows, as did Uppuluri at the type locality.

The Prineville chemical type flows in the Clackamas River drainage are easily distinguishable from other Grande Ronde flows by both major oxide and trace element data. Four trace

elements, Sm, Eu, Ba and Co, are particularly striking as differentiators. Ba concentrations in the Clackamas River flows are higher by a factor of two to three than any of the other flows in the section. The only comparable value anywhere in the Columbia River Basalt Group is that of the Umatilla Member of the Saddle Mountains Basalt, which has Ba concentrations that are slightly higher. Conversely, Co abundances in the Clackamas River flows are 30 to 37 percent lower than all other flows in the section. It is in fact lower than in any other chemical type in the entire Columbia River Basalt Group. Eu, like Ba, has concentrations that are greater than the other flows by a factor of two to three, which is approximately equal to the Umatilla and slightly exceeded by the youngest of the two Ice Harbor flows of the Saddle Mountains Basalt. Sm concentrations are 30 to 60 percent higher than Low Mg flows and 80 to 85 percent higher than High Mg Grande Ronde flows. Major oxide distinctions include P_2O_5 concentrations that are three to four times greater, SiO_2 that is 2 to 4 percent lower, and TiO_2 that is up to 40 percent higher than other Grande Ronde types.

The Prineville flows, as their unusual chemistry would suggest, are petrographically distinguishable from other Grande Ronde flows. Their most distinctive characteristic is the anomalously long, acicular apatite crystals that occur in great abundance in all thin sections. Acicular apatite also occurs in other flows in the section but is relatively finer-grained by a factor of three to four. The presence of these crystals is a direct reflection of the anomalously high

P₂O₅ content.

The Prineville flows can also be distinguished from the rest of the Grande Ronde section on the basis of jointing characteristics. They rarely have hackly entablatures and consist almost entirely of fair-to-well-developed blocky colonnades. This contrasts dramatically with the entablature-dominant, Low Mg Grande Ronde flows above and below them.

The stratigraphy of the basalts along the Clackamas River is also characterized by interbeds, as previously noted. These units increase in number and thickness from north to south across the area. They are useful stratigraphic markers on a local basis. Although the composition of the interbeds is varied, the presence of stratified, fine-grained deposits clearly indicates that bodies of water covered much of the area. Pillow complexes up to 25 m thick commonly occur above these deposits indicating ponded water. This condition prevailed throughout CRB time in the Clackamas River area and was also the case in other peripheral areas of the Columbia Plateau as well (Swanson, 1978).

Geologic History

Very little contemporaneous structural activity is indicated during CRB time. Minor pre-reversal folding is indicated by dips that are steeper within the Prineville flows than in overlying flows in some localities. The magnitude of this folding is considered minor since the number of flows and their collective thickness within the Grande Ronde subunits is nearly constant across the Clackamas River area (Anderson, 1978). Broad basining and possible faulting is indicated by the

exclusion of the upper two to three flows of the Frenchman Springs sequence from the area immediately adjacent to the southern edge of the basalt. This occurs over a distance of 1.8 to 3.7 km and involves about 67 m of section.

The major offsets observed on faults cutting CRB in the Clackamas River area are mostly post-Sardine in age.

E. Old Maid Flat Exploratory Hole

The exploratory hole at Old Maid Flat (2S/8E-15cd) on the western flank of Mt. Hood was drilled to a depth of 4,003 ft at an elevation of 2,750 ft. The hole was drilled with rotary bits and all samples collected were cuttings brought up with the circulating mud. Most samples from any given depth contained much less than 100 percent of any one rock type indicating a significant amount of uphole contamination, becoming a more serious problem with depth. From a complete set of samples split from those collected at the time of drilling, we chose samples for analysis that seemed most likely to contain a high percentage of basalt. We were guided in this choice by the lithologic log and various downhole geophysical logs. From these samples we chose seven that appeared to represent seven individual flows, most of which were greater than 30 m thick, and one sample consisting of large chips of gabbro brought up on the bit from a depth near 3500 ft. Each sample selected was thoroughly washed and sieved to obtain larger fragments which were then hand picked with the aid of a binocular microscope. The most abundant group of basaltic chips in each sample with similar physical characteristics were selected for analysis. Approximately one gram of each

sample was selected and then further cleaned in an ultrasonic vibrator to remove any traces of drilling mud and other clay-sized particles. The eight prepared samples were then analyzed by instrumental neutron activation analysis (INAA) in the standard manner.

The geochemical data generated are presented in Figure III-3 and a summarized evaluation of this data in terms of identification and correlation is presented in Figure III-4. The results are summarized as follows:

1. All basalt samples analyzed are CRB and each was identified with considerable confidence as to individual chemical type.

2. Basalt occurs beneath the Old Maid Flat site at a depth interval from 2028 to 3850 ft, a total interval of 1822 ft. This composite thickness is very similar to the CRB in the Clackamas River area. We originally predicted that the thickness of CRB beneath Mt. Hood would be between 1500 and 2000 ft based on a composite thickness of all units of CRB known to occur from the Columbia River Gorge to the Clackamas River.

3. The bottom 1045 ft of this interval is bracketed by Low Mg Grande Ronde Basalt flows which is comparable in thickness to sections at Multnomah Creek (1100 ft) and in Clackamas River Area (1500 ft).

4. Sample OMF 3140 is from a Prineville chemical type flow. The position of this flow, below a Low Mg Grande Ronde flow is similar to that of the uppermost Prineville flow at Tygh Ridge (Nathan and Ruchter, 1974). No other Prineville flows are known in the Cascade Range other than those recently

SAMPLE	NA		LA		SM		CE		EU	
OMF 2072	2.05	0.04	25.7	1.80	7.52	0.14	57.00	3.00	2.18	0.09
OMF 2900	1.94	0.04	22.8	1.60	6.01	0.12	49.00	3.00	1.90	0.08
OMF 3140	2.43	0.04	23.4	1.80	8.69	0.14	53.00	3.00	3.57	0.13
OMF 3290	2.20	0.04	23.5	1.60	6.63	0.12	50.00	3.00	2.32	0.09
OMF 3518	2.02	0.04	11.1	1.20	3.12	0.08	30.00	2.00	1.10	0.06
OMF 3530	2.33	0.04	23.6	1.80	7.58	0.14	51.00	3.00	2.69	0.11
OMF 3680	2.00	0.04	26.7	1.80	6.82	0.12	58.00	3.00	1.81	0.08
OMF 3850	2.25	0.04	26.5	2.00	7.23	0.14	60.00	3.00	2.17	0.09
SAMPLE	LU		IH		HF		CO		FE	
OMF 2072	0.60	0.09	4.10	0.40	3.80	0.60	38.40	1.10	10.62	0.12
OMF 2900	0.54	0.08	5.20	0.40	3.60	0.60	38.30	1.10	8.74	0.11
OMF 3140	0.62	0.09	3.90	0.40	3.10	0.60	27.40	0.90	8.69	0.11
OMF 3290	0.62	0.09	4.40	0.40	3.40	0.60	33.00	1.00	8.44	0.10
OMF 3518	0.35	0.06	1.50	0.30	2.40	0.40	42.70	1.00	6.91	0.09
OMF 3530	0.51	0.09	4.40	0.40	3.60	0.60	30.90	1.00	8.59	0.11
OMF 3680	0.44	0.08	6.20	0.40	4.30	0.60	35.90	1.00	8.67	0.11
OMF 3850	0.58	0.09	6.60	0.50	6.00	0.70	35.30	1.10	9.34	0.12
SAMPLE	SC		CH		BA					
OMF 2072	36.60	0.20	31.00	10.00	490.00	150.00	Frenchman Springs Member			
OMF 2900	33.99	0.19	17.00	8.00	550.00	140.00	Low Mg Grande Ronde Basalt			
OMF 3140	36.40	0.20	8.00	7.00	2400.00	300.00	Prineville Basalt			
OMF 3290	33.33	0.19	20.00	8.00	1030.00	170.00	Log Mg Grande Ronde Basalt (Contaminated)			
OMF 3518	26.02	0.15	340.00	80.00	170.00	100.00	Gabbro - Not CRB			
OMF 3530	35.28	0.20	31.00	10.00	1290.00	180.00	Low Mg Grande Ronde Basalt (Contaminated)			
OMF 3680	31.95	0.18	17.00	8.00	590.00	140.00	Low Mg Grande Ronde Basalt			
OMF 3850	33.48	0.20	21.00	9.00	630.00	140.00	Low Mg Grande Ronde Basalt			

Figure III-3. Geochemical data on Old Maid Flat drill hole samples.

Elevation	Depth	Thickness	Sample	Geochemical Identification & Comments
2750'	0	2028'		Post CRB Mudflow Deposits, alluvium and volcanic sediments
722'	2028'	60'	OMF2072	Frenchman Springs Member
662'	2088'	727'		(Local volcanic episode)
-65'	2815'	167'	OMF2900	Low Mg Grande Ronde Basalt (2253-Age dated Sample - 12.2 + 2 m.y.) #3070' Sidewall sample Normal Polarity)
-232'	2982'	208'	OMF3140	Prineville Basalt
-440'	3190'	150'	OMF3290	Low Mg Grande Ronde Basalt (contaminated w/Prineville)
-590'	3340'	170'	OMF3518	(Interbed & small intrusion) Gabbro - dike or sill
-760'	3510'	120'	OMF3530	Low Mg Grande Ronde Basalt (contaminated w/Prineville)
-880'	3630'	110'	OMF3680	Low Mg Grande Ronde Basalt
-990'	3740'	110'	OMF3850	Low Mg Grande Ronde Basalt
-1100'	3850'	150'		Volcanic sediments (XLTuff - age dated 8 m.y.)
-1250'	3970'			

Total Thickness of CRB interval - 1822'; 1045' of Low Mg Grande Ronde

Figure III-4. Columbia River Basalt stratigraphy in Old Maid Flat Exploratory Hole

found in the Clackamas River area (Beeson and others, 1976; Anderson, 1978).

5. Samples OMF 3290 and OMF 3530 are Low Mg Grande Ronde contaminated with approximately 40 percent Prineville basalt from uphole. This is indicated by the Low Mg Grande Ronde chemistry except for Ba, Sm, Sc, Co and Eu which have values between those of Prineville and Low Mg Grande Ronde.

These preliminary conclusions indicate that, except for local interbeds, a normal thickness of CRB occurs under Mt. Hood and that the 3850 ft sample is probably the lowest (or near to the lowest) CRB flow in this area. This suggests that the rocks below this sample are older than the CRB. It is possible that the lower 153 ft of the hole represents an interbed, but it is doubted that the CRB extends much below this level. Further study of the geophysical logs and the cuttings should be carried out to refine the thickness of basalt flows and detect possible interbeds, although interbeds beds of significant thickness are known to occur between depths of 3340 and 3510 ft and 2088 and 2815 ft. The lower interval is complicated by a gabbroic intrusive (OMF 3518) not related to CRB. The upper interval is much thicker than any known interbed in the Cascade Range (even the Clackamas River area which is marginal to an older highland) which indicates a contemporaneous local center of andesitic volcanic activity. This local volcanic activity effectively produced a topographic high which prevented CRB flows from covering this area until the Frenchman Springs flow which occurs in the hole from 2028 to 2088 ft. It should be noted that the

only volcanic interbed within the CRB in the nearby Bull Run River area is a synclinally localized, 30 ft thick, light tuffaceous sediment which occurs between two High Mg Grande Ronde flows and is within the same time interval as this major interbed at Mt. Hood. The same stratigraphic horizon in the Salmon River and Brightwood areas show no interbed.

The CRB at Old Maid Flat occurs between an elevation of 772 ft above and 1100 ft below sea level. Therefore, it is likely that considerable down faulting occurred about Mt. Hood in addition to earlier folding of CRB. The presence of a Prineville basalt flow locally suggests that the area was structurally low, although not the lowest point in the structure as no hyaloclastic materials were noted in the cuttings from the Old Maid Flat hole.

A sample of the uppermost Grande Ronde flow from 2953 ft was dated by $40\text{K}/40\text{Ar}$ with the resulting age determined to be 12.2 ± 2 my which seems to conflict with the relative age from stratigraphic criteria. It is believed that the data is compatible because the age may be within the limits of analytical error and the possibility of Argon loss at elevated geothermal temperatures which probably existed in the geologic past is exceedingly great. Atlantic Richfield Hanford Company (p. 49, 1976) dated approximately 300 samples of Yakima Basalt by the $40\text{K}/40\text{Ar}$ method. They state:

"The apparent ages of the samples below Rosa range in erratic fashion from about 11 to 15 million years B.P. Investigations as to the cause for the erratic relationship between potassium-40 and argon-40 revealed that the variation in apparent age increased as the glass content increased and was highly erratic in those samples in which glass had altered to palagonite."

Low Mg Grande Ronde flows, as a group, are finer grained and contain more glass than other units.

IV. GENERALIZED STRUCTURAL MODEL OF THE CRB IN THE CASCADE RANGE

A. Introduction

Although the exposures of CRB are somewhat limited in the general Mt. Hood area, certain consistencies lead the authors to believe that a generalized structural model can be presented that is at least a first order approximation of the actual geologic structure.

The structural model which is proposed consists of 1) several NE trending folds passing through the Cascade Range and merging with folds of the Columbia Plateau (at least one of the anticlines is faulted and thrust in places); 2) a wrench fault zone exposed in the Clackamas River area which is aligned with the Brothers fault zone and the Portland Hills fault zone and along which NW trending en echelon faults and a few NW trending folds occur; and 3) N-NW trending fractures and faults some of which display right lateral movement, the more northerly oriented often being the locus of dike injection; 4) Cascade upwarp and cauldron-type faulting around Mt. Hood.

B. NE Trending Folds and Thrust Faults

The most dominant and consistent structural trend in the CRB is the NE trending folds. Most strike from N40 to 65E which is similar to those along the Columbia River from Hood River to The Dalles. Because the structure began to develop during the time that the CRB was still spreading over the area, it is assumed that fold trends project across the present Cascade Range and merge with those of the plateau. The

mapping of CRB in the Hood River Valley area tends to confirm this premise.

The characteristics of the NE-trending folds are generalized as follows:

1. They are asymmetrical with gentle dips (5-15 degrees) on the SE limbs of the anticlines and steep dips (25-35 degrees) on the NW limbs.

2. The anticlines are occasionally thrust faulted on the NW limb with thrusting from SE to NW.

3. Folding began by High Mg Grande Ronde time. Pillow lavas and interbeds often occur in synclines; abbreviated sections occur in crests of anticlines.

4. Folding continued to build structural relief long after the last CRB flow (Priest Rapids) entered the area. Total structural relief on the folds in the Bull Run Watershed is on the order of 300 m.

5. These folds seem to change trend and/or terminate near the N30W trending Salmon River fault.

6. Near the anticline hingeline, zones of brecciation which parallel flow layers are common.

These folds are similar in trend, age, and physical characteristics to those in CRB on the western margin of the Columbia Plateau (Kienle and others, 1978) which strongly suggests that they belong to the same episode of deformation.

An extrapolation of Columbia Plateau folds southwestward across the Cascade Range, provides the following structural correlations:

1. The Mosier syncline extends up the West Fork Hood

River and becomes the Bull Run syncline.

2. The Ortley anticline extends into the Bull Run anticline which then curves southward to Brightwood where it terminates against the N30W trending Salmon River fault. This anticline is known to be faulted on the NW limb where it crosses the Columbia River. The NW limb is also thrust-faulted in the Bull Run Watershed area.

3. The Dalles syncline has no equivalent fold exposed west of the Cascades, but it should project under Mt. Hood. It is suspected that this is the major syncline through the Cascades in this area, and possibly contains western Oregon CRB flows not found in other exposures of the Cascades, such as the Waverly flows and the Pomona flow.

4. The south limb of this syncline may be the north limb of the anticline that is mapped in the upper Salmon River. No thrust fault has been observed in this anticline, but tectonic breccias occur just northwest of this anticline near the south Fork Salmon River.

Thrust zones parallel to the NE fold structures have not been previously noted. A major thrust on the NW limb of the Bull Run anticline and fragments of thrust zones on the South Fork Salmon River (?) and in the vicinity of Arrah Wana have been mapped. The characteristics of these thrust faults are as follows:

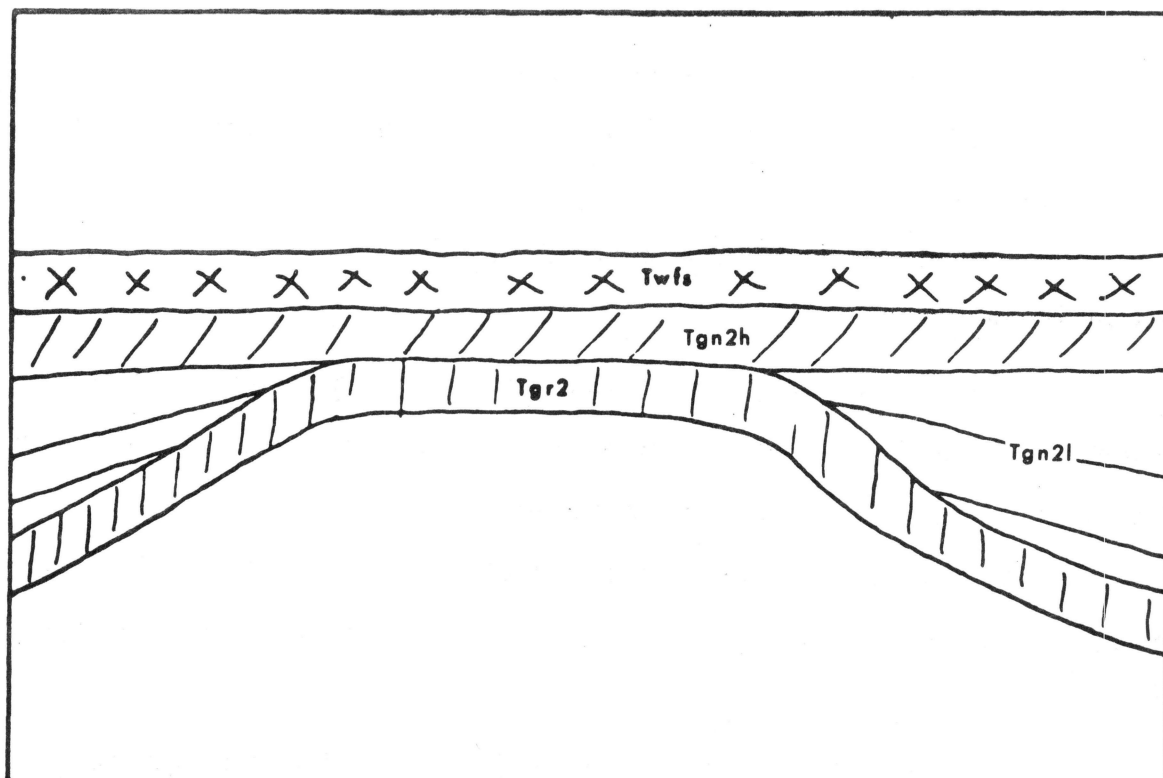
1. Thick (100-200 m) massive fine to coarse breccia zone above thrust plane.

2. Thin (1-3 m) coarse breccia zone below the thrust plane.

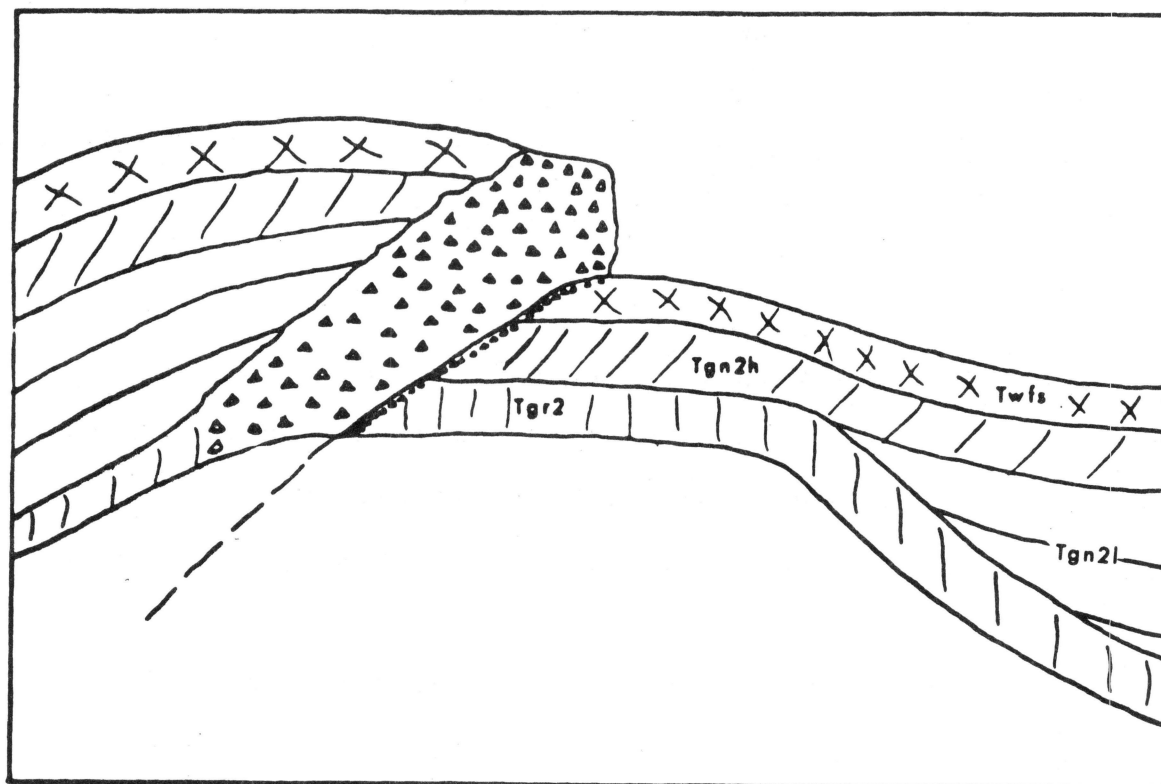
3. Low angle (~12 degrees SE) thrust plane.
4. Magnitude of thrusting is approximately one km with approximately 200 m of throw.
5. Within the breccia zone flow contacts and attitudes are obscured.
6. Dip of the thrust faults changes along strike and may become faults which appear to have mostly vertical movement in the same sense as the thrust movement.
7. Thrust faults are associated with pre-existing zones of weakness in the basalt such as thinned CRB sections or vertical faults.
8. NW trending fractures (N20W) appear to cut thrust zone breccias which have resulted in cemented zones which now stand out as resistant ridges as a result of differential weathering.
9. Breccias of thrust zones are massive and show coherent but little hydrothermal alteration or cementation except for the N20W trending ridges.

Detailed stratigraphy in the Bull Run Watershed area reveals an abbreviated section of CRB adjacent to the thrust fault. It is believed that this thinned section is directly related to the development of the thrust fault in this area (Figure IV-1).

It is concluded that the thrust faults represent fairly shallow, thin-skinned deformation of the brittle, competent basaltic flows in response to N-NW to S-SE compression. These faults may not extend to a great depth below the basaltic layer because the underlying less competent rocks may have



a)



b)

Figure IV-1. Development of Bull Run thrust fault. Sketches show cross-sections (a) pre-thrust and (b) post-thrust

failed more by folding. There is no evidence to indicate that these zones extended through the lithosphere to provide paths for magmas to migrate to the surface.

C. Wrench Fault Zone

The second major feature of this structural model is a wrench fault zone exposed in the Clackamas River area. This wrench zone which is on trend with the Brother's fault zone - Portland Hills fault zone has the following characteristics:

1. En echelon faults, both right lateral and normal, which are oriented about N30W, slightly different than the trend of the wrench zone itself (~N45W).
2. A few NW trending folds occur such as the one in Roaring River and the Portland Hills. The trend of these folds is slightly more westerly than that of the wrench itself. Fold of this trend seem to be restricted to the southwest of the N30W trending Salmon River fault. The wrench zone seems to be more convergent (more folds) near Portland and more divergent (more faulting) in the Clackamas River area.

D. NW Trending Faults and Fractures

Another structural feature that appears to occur throughout the entire area is a system of N-NW trending fractures and faults. Some of these faults display slickensides which indicate that right lateral movement has occurred. These fractures and faults may be subdivided roughly into three dominant trends:

1. N10-20W - Have little if any vertical offset; fault zones are narrow (~5 m), brecciated and cemented; cavity

fillings are common; Boring-type (Plio-Pleistocene) basaltic dikes usually occur in fractures having this orientation; fractures with this orientation cut across the flows and breccia zone.

2. N30W - Have wide breccia zone (10-30 m); some cavity fillings; no dikes; occasional considerable vertical offset.

3. N55W - Trends occur most commonly near the thrust zone in the Bull Run Watershed Area; no vertical offset observed; little breccia in a narrow (~1 m) zone.

These fractures seem to vary considerably in length, but the N30W and the N10-20W are more extensive than the N55W fractures. Individual fractures seem to connect to those of another trend which gives the impression that the lithosphere has rifted along an irregular line bounded by fractures of different orientations (Figure IV-2). Detailed observations along streams show that stream trends are often the result of two trends which intersect one another (Figure IV-3). We interpret these trends to indicate predominantly extension along N10-20W zones and right lateral movement along N30W zones. The N55W zones show little evidence of movement and may be a secondary effect concentrated near existing thrust faults.

E. Cascade Upwarp and Subsidence

The CRB dips gently away from the High Cascades on both the west and east flanks of the Cascades in the vicinity of Mt. Hood. This broad feature is probably related more to the nature of subduction beneath the Cascades than to coupled

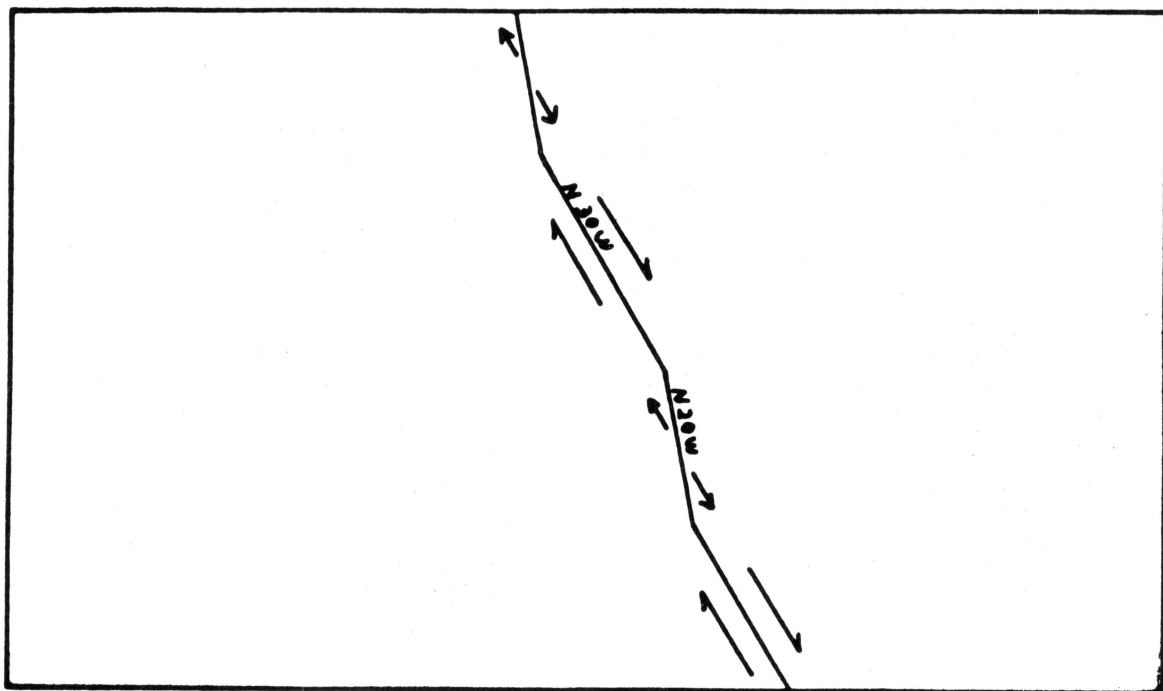


Figure IV-2. Pattern of faulting. N20W trend is zone of extension and dike emplacement.

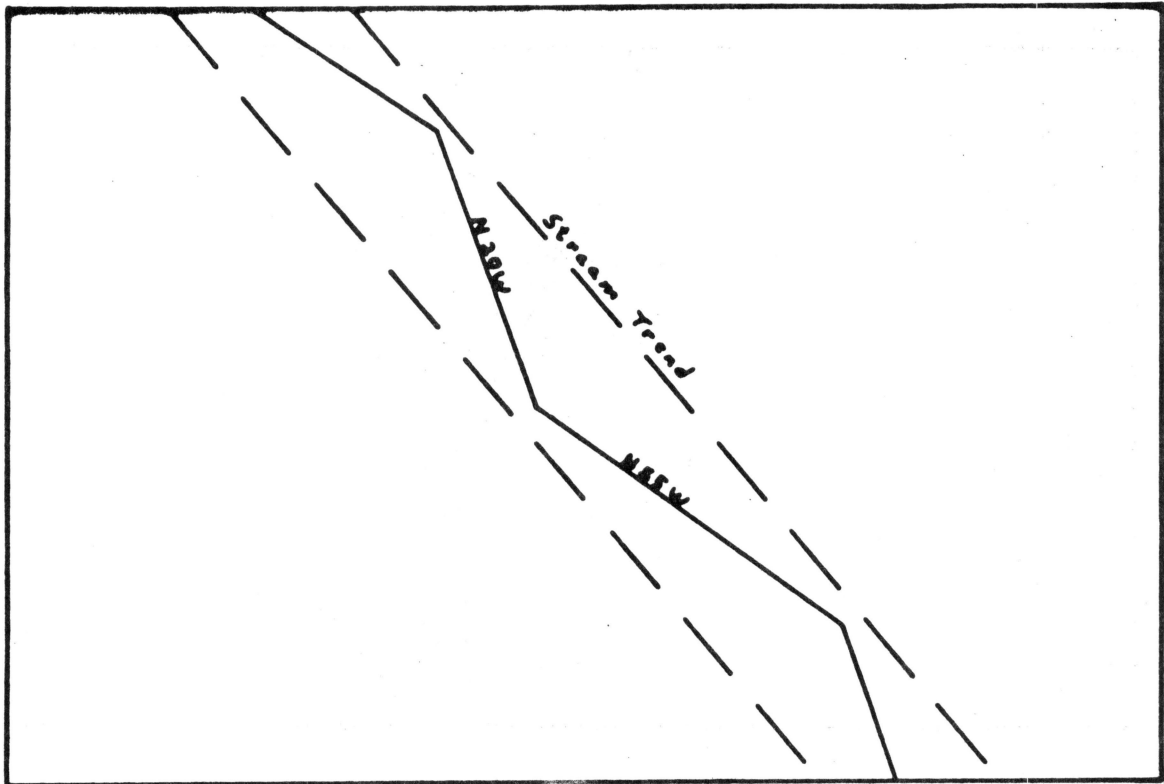


Figure IV-3. Fracture pattern controlling stream trend in upper Blazed Alder Creek.

wrenching of the continental lithospheric plate. We assume that active subduction occurred during most of the Cascade volcanism which resulted in intrusion and extrusion of intermediate composition melts which heated and swelled the crust producing upwarping. Lack of present day seismicity argues against an active subduction zone and subsidence of the crest of the range may indicate recent extension.

North-trending faults within the Hood River fault zone contain slickensides which indicate right lateral movement with a vertical component. We believe that the Cascade Range, due possibly to its higher than normal heat flow, has behaved anomalously to the regional stresses resulting in a right lateral wrenching along this zone. Deeper rocks along the Cascade Range may behave more plastically to wrenching, than the cooler, more brittle rocks near the surface. This wrenching combined with E-W extension may have produced the series of eastward tilted blocks in the Hood River area. It also seems possible that the extension may have caused partial melting at the base of the crust thereby producing magma to supply the High Cascade volcanoes in the absence of an active subduction zone.

The top of the CRB at an elevation of 2028 ft in the Old Maid Flat exploratory hole suggests the possibility that cauldron-type subsidence has occurred. Extension of the Cascade Range and magmatization at depth may both be instrumental in producing the subsidence. The margins of the subsidence are not well known due to extremely sparse data, but the abrupt termination of the CRB south of Middle Mountain and the general

physiography would suggest that subsidence is largely confined between the Hood River fault zone on the east and a NE-trending line from Dee to Zigzag on the west. North of Dee to the Columbia River, tilted blocks towards the Hood River fault zone may reflect the termination of graben-type subsidence. Radiometric ages of andesite near the Hood River fault decrease northward suggesting progression of faulting to the north. The southern margin of subsidence is even more poorly defined, but it does terminate north of the Salmon River.

V. GEOLOGIC HISTORY OF THE MOUNT HOOD AREA

A. Pre-Columbia River Basalt

Geologic evidence as to the nature of the area prior to CRB time (16 my BP) is limited largely to exposures of the Eagle Creek Formation and the in part, time-equivalent, Little Butte Volcanic Series. The Eagle Creek formation is composed mostly of mudflow deposits and conglomerates and ubiquitous basaltic andesite flows derived from volcanoes of the western Cascades, located north of the Columbia River Gorge and south of the Clackamas River. The Little Butte Volcanic Series consists primarily of mudflow deposits and tuffs. The lowland area between the aforementioned highs must have contained one or more westwardly-flowing streams. Perhaps the John Day Formation - correlative in part to the Eagle Creek and Little Butte Formations - may have extended as a wedge into this low area or gap. The lowest section from the Old Maid Flat exploratory hole is similar to rocks of the John Day Formation which crops out near Warm Springs, 50 km to the southeast.

The Portland Hills fault - Clackamas River wrench zone was probably already active and expressed topographically, judging from the distribution of the CRB northwest of Portland (Beeson and others, 1976) and its abrupt termination in the Clackamas River area.

B. Columbia River Basalt

During the middle Miocene (16-14 my BP) approximately 29 different flows of the Columbia River Basalt Group entered the area. The maximum number of flows in any one section is about 20 flows which means that approximately one flow entered

the area every 100,000 years; however, there apparently was variation in time between successive flows. Flows present represent the N_1 , R_2 , N_2 , and R_3 magnetic polarity intervals and longer than normal intervals exist between flows at the Vantage horizon and between the Frenchman Springs and Priest Rapids Members of the Wanapum Basalt. At least one N_1 flow occurs in the Columbia River Gorge and in the Clackamas River indicating that some of the earliest flows to pass through the Cascades covered the entire gap. This same distribution generally characterizes most succeeding units up through the Frenchman Springs flows.

After Frenchman Springs time, either uplift in the Cascade Range, subsidence in the Columbia Plateau, or NE trending folds prevented later flows from covering extensive areas across the Cascades. The Rosa flows apparently did not extend into the area because they are not present in any of the CRB sections; and Priest Rapids flows have only been found locally along the Mosier syncline in the Bull Run Watershed area where they are partly confined as intracanyon flows.

During the time that the CRB flowed through the Cascade Range several geologic events took place which are detailed as follows:

1. Invasion of the Prineville Basalt flows - While the Low Mg Grande Ronde Basalt flows were flowing through the Cascades from the east, eruptions of basalt in the vicinity of the Prineville, Oregon, produced approximately 13 flows (Uppuluri, 1974), three of which flowed northwestward into the Cascade region to interfinger with the Grande Ronde Basalt. Two Prineville flows (stratigraphically at the top

of R_2) extended into the Clackamas River area and northward to Tygh Ridge. Later (near top of Low Mg Grande Ronde N_2), one flowed northward to Tygh Ridge and by an unknown route into the Mt. Hood area.

2. Local andesitic volcanic center near Old Maid Flat - Eruption began during the interval between High Mg and Low Mg Grande Ronde time and probably continued throughout CRB time even though one Frenchman Springs flow finally covered at least part of this andesitic center.

3. NE trending folds - The Waverly flows near Milwaukie seem to be localized flows that were probably channeled by a syncline or stream canyon developed within a structural depression or zone of weakness. Waverly flows have not been discovered as yet in the Cascades. A possible path for these two flows is The Dalles - Mt. Hood syncline. In the Bull Run watershed area the omission of all Low Mg N_2 flows in the Blazed Alder Creek exposures indicate structural development during CRB time.

4. Priest Rapids Intracanyon Flow - Priest Rapids lava flowed through the Mosier syncline and into canyons cut into CRB as deep as Low Mg Grande Ronde. The former stream valley extended from the West Fork Hood River through the Bull Run Watershed to Crown Point. The Priest Rapids flows overfilled the canyons and completely obliterated the former drainage, probably defeating the stream and shifting it to another location.

5. Pomona flow (12 my BP) - After Priest Rapids time,

structural development of the NE trending folds continued and volcanism in the Cascades filled structural valleys to the east with volcanic debris which was partially water deposited. An example of the latter is the Selah Member of the Ellensburg formation (Kent, 1978). The Pomona flow passed through the Cascade Range, probably channeled by structural and erosional valleys, in a yet to be determined location.

C. Post-Columbia River Basalt

Volcanism and plutonism continued in the Cascades area in post-CRB time. Larger volcanic centers were probably concentrated on The Dalles - Mt. Hood syncline. The Still Creek (11.6 my BP) and Laurel Hill (8 my BP) plutons must have been emplaced in The Dalles - Mt. Hood syncline which probably defeated any stream which might have flowed within the structure. Perhaps it was during this time interval that the Columbia River was shifted to its present course. In post-CRB time several geologic events occurred:

1. Continued development of NE trending folds and thrust faulting in places. At least 300 m of structural amplitude exists along north-south cross-sections in the Bull Run Watershed, most of which developed after the last Frenchman Springs flow (approximately 14-15 mp BP). Even more relief may be present on the extension of The Dalles syncline, buried under Mount Hood.

2. Rhododendron volcanism - Most Rhododendron deposits were produced as a result of eruption from andesitic volcanic centers. Much of the products preserved occur as sedimentary

deposits that accumulated in synclinal depressions in the CRB.

3. Development of NW trending faults and fractures - NW trending faults appear to have been active after most of the NE trending events occurred. The N30W trending Salmon River fault cuts off the NE trending folds. Considerable displacement occurs on N30W trending faults at Arrah Wanna and on Middle Mountain. A N15W fracture in Blazed Alder Creek and Tanner Creek is extremely linear across the Bull Run syncline. N10-20W fractures also cut the thrust zone breccias.

4. Uplift of the Cascade Arch - Uparching of the Cascade Range occurred sometime subsequent to the CRB eruptions (14-15 my BP). Insufficient data are available to determine when the major uplift occurred. Perhaps uplift was most active during subduction which resulted in thickening of the crust, emplacement of plutons and heating and possible hydration of the lithosphere. Most plutons and extrusions in the Mt. Hood Area range in age from 11.6 to 4 my BP.

5. Boring Lava volcanism - Boring lava was erupted from centers and widely scattered N-N20W trending dikes which are common from Hood River to Portland (Allen, 1977). Boring volcanism seems to be associated with E-W extension throughout the area.

6. Subsidence along the High Cascades - The Hood River fault probably resulted from right lateral wrenching and subsequent subsidence after the earlier erupted Boring-type lavas (reversed polarity, perhaps 3 my BP). Some of these flows are tilted about 10 degrees to the east towards the

Hood River fault.

7. High Cascade volcanism - This was perhaps the last major event and may have been associated with subsidence around Mt. Hood.

REFERENCES CITES

- Allen, J. E., 1975, Volcanoes of the Portland Area, Oregon: Ore Bin, V. 37, No. 9, p. 145-157.
- Anderson, J. L., 1978, The structure and stratigraphy of the Columbia River Basalt in the Clackamas River drainage: Portland State University master's thesis, 136 p.
- Atlantic Richfield Hanford Company, 1976, Preliminary Feasibility Study of Radioactive Wastes in Columbia River Basalts: ERDA Rept. ARH-ST-137, (text, 168 p.) and v. 2 (appendixes, 264 p.).
- Beaulieu, J. D., 1974, Geologic hazards of the Bull Run Watershed, Multnomah and Clackamas Counties, Oregon: Oregon Dept. of Geology and Mineral Industries Bulletin 82, 77 p.
- Beeson, M. H., Johnson, A. G., and Moran, M. R., 1976, Portland environmental geology - fault identification: Menlo Park, Calif., Final technical report (Sept. 1, 1974, to Dec. 31, 1975) to the U. S. Geological Survey, 107 p.
- Beeson, M. H., Moran, M. R., and Olson, F. L., 1976, Geochemical data on Columbia River Basalt stratigraphy in western Oregon: Geol. Soc. America Abs. with programs, v. 8, no. 3, p. 354.
- Bikerman, M., 1970, K-A ages of Laurel Hill pluton and dike, Oregon: Ore Bin, v. 32, no. 11, p. 211-215.
- Brock, M. R., and Groiler, M. H., 1973, Chemical analyses of basalt samples from the Columbia Plateau, Washington, Oregon and Idaho: U. S. Geol. Survey open file report.
- Dames and Moore, 1972a, Progress report, consultations and inspections, earth slide, North Fork of the Bull Run River: Portland, Oregon, report for the City of Portland, 8 p., unpublished.
- _____, 1972b, Progress report no. 2, consultations and inspections, earth slide, North Fork of the Bull Run River: Portland, Oregon, report for the City of Portland, 4 p., unpublished.
- _____, 1973, Summary report, consultations and inspections, earth slide, North Fork, Bull Run River: Portland, Oregon, report for the City of Portland, 7 p., unpublished.

- Kent, M. H., 1978, Stratigraphy and petrography of the Selah Member of the Ellensburg Formation in south-central Washington and north-central Oregon: Portland State University Master's thesis, 118 p.
- Kienle, C. F., Jr., Newcomb, R. C., Deacon, R. J., Faroqui, S. M., Bentley, R. D., Anderson, J. L., and Thoms, R. E., 1978, Western Columbia Plateau's Tectonic Structures and their Age of Deformation: in Tectonics and Seismicity of the Columbia Plateau Workshop, Basalt Waste Isolation Program, Battelle Conference, Seattle, Washington, 17 p.
- Kienle, C. F., Jr., 1971, The Yakima Basalt in western Oregon and Washington: University of California, Santa Barbara, doctoral dissertation, 171 p.
- Ledgerwood, R. K., 1978, Subsurface stratigraphic correlation, in Basalt Waste Isolation Program annual report - fiscal year 1978: Richland, Wash., Rockwell Hanford Operations, p. 82-87.
- Mackin, J. H., 1961, A stratigraphic section in the Yakima Basalt and Ellensburg Formation in south-central Washington: Olympia, Wash., State of Washington Division of Mines and Geology Report of Investigations 19, 45 p.
- McKee, E. H., Swanson, D. A., and Wright, T. L., 1977, Duration and volume of Columbia River Basalt volcanism, Washington, Oregon, and Idaho: Geological Society of America Abstract with Programs, v. 9, no. 4, p. 463-464.
- Nathan, Simon, and Fruchter, J. R., 1974, Geochemical and paleomagnetic stratigraphy of the Picture Gorge and Yakima Basalts (Columbia River Group) in central Oregon: Geological Society of America Bulletin, v. 85, p. 63-76.
- Patterson, P. V., 1973, North Fork Bull Run River landslide - post-construction engineering geology report: Portland, Oregon, Mount Hood National Forest, Materials Engineering Section, 32 p.
- Peck, D. L., Griggs, A. B., Schlicker, H. G., Wells, F. G., and Dole, H. M., 1964, Geology of the central and northern part of the western Cascades: U. S. Geological Survey Professional Paper 449, 56 p.
- Ruff, L. L., 1957, Bull Run Dam No. 2 - geology and foundations: Report for the City of Portland Bureau of Water Works, 11 p., unpublished.
- Schlicker, H. G., 1961, Geological Reconnaissance of Bull Run damsite No. 2: Portland, Oregon, report to the City of Portland Bureau of Water Works, unpublished.

- Schmincke, H. U., 1967, Stratigraphy and petrography of four upper Yakima Basalt flows in south-central Washington: Geological Society of America Bulletin, v. 78, p. 1385-1422.
- Shannon and Wilson, Inc., 1958a, Test embankment Bull Run Dam No. 2: Portland, Oregon, report to the City of Portland, 8 p., unpublished.
- _____, 1958b, Report of soil tests for the design of proposed Bull Run Dam No. 2: Portland, Oregon, report to Stevens and Thompson, Inc., 10 p., unpublished.
- _____, 1961, Report on geology and engineering feasibility of increased storage at Bull Run Lake, Oregon: Portland, Oregon, report for the City of Portland, 22 p., unpublished.
- _____, 1963, Design and performance memorandum, Bull Run Dam No. 2, Oregon: Portland, Oregon, unpublished.
- _____, 1965, Preliminary site explorations and studies, Ditch Camp slide, Bull Run, Oregon: Portland, Oregon, report to Stevens and Thompson, Inc., 29 p., unpublished.
- _____, 1973, Geologic reconnaissance and preliminary engineering studies for a water tunnel - Bull Run Dam No. 2 to Dodge Park area: Portland, Oregon, report to the City of Portland, 15 p., unpublished.
- Snavely, P. D., Macleod, N. S., Wagner, H. C., 1973, Miocene tholeiitic basalts of coastal Oregon and Washington and their relations to coeval basalts of the Columbia Plateau: Geological Society of America Bulletin, v. 84, no. 2, p. 387-424.
- Stevens, F. R., 1964, Soil Survey, Bull Run-Sandy area, Oregon: Portland, Oregon, Mount Hood National Forest Administrative Report, 477 p., unpublished.
- Stevens and Thompson, Inc., 1957, Bull Run Storage Dam No. 2 and hydroelectric power facilities, Bull Run River: Portland, Oregon, report for the City of Portland, 61 p., unpublished.
- _____, 1965, Report on water supply conduits through Ditch Camp slide area: Portland, Oregon, report for the City of Portland, 9 p., unpublished.
- Swanson, D. A., 1978, Highlights of the regional Columbia River Basalt mapping program, in Basalt Waste Isolation Program: Richland, Wash., Rockwell Hanford Operations RHO-BWI-78-100, p. 47.

- Swanson, D. A., Wright, T. L., and Helz, R. T., 1975, Linear vent systems and estimated rates of magma production and eruption for the Yakima Basalt on the Columbia Plateau: American Journal of Science, v. 275, p. 877-905.
- Swanson, D. A., Wright, T. L., Hooper, P. R., and Bentley, R. D., in press, Revisions in stratigraphic nomenclature of the Columbia River Basalt Group: U. S. Geological Survey Bulletin.
- Taubeneck, W. H., 1970, Dikes of Columbia River Basalt in northeastern Oregon, western Idaho, and southeastern Washington, in Gilmour, E. H., and Stradling, eds., Proceedings of the Second Columbia River Basalt Symposium: Cheney, Wash., Eastern Oregon State College Press, p. 73-96.
- Uppuluri, V. R., 1973, A stratigraphic and compositional study of basalts of the Columbia River Group near Prineville, central Oregon: M. S. thesis, University of Oregon, Eugene, 87 p.
- _____, 1974, Prineville chemical type: A new basalt type in the Columbia River Group: Geological Society of America Bulletin, v. 85, p. 1315-1318.
- Waters, A. C., 1961, Stratigraphic and lithologic variations in the Columbia River Basalt: American Journal of Science, v. 259, p. 583-611.
- _____, 1962, Basalt magma types and their tectonic association: Pacific Northwest of the United States: American Geophysical Union Geophysical Monograph 6, p. 158-170.
- Watkins, N. D., and Baksi, A. K., 1974, Magnetostratigraphy and oroclinal folding of the Columbia River, Steens, and Owyhee basalts in Oregon, Washington, and Idaho: American Journal of Science, v. 274, p. 148-189.
- Wise, W. S., 1969, Geology and petrology of the Mount Hood area - a study of High Cascade volcanism: Geological Society of America Bulletin, v. 80, no. 6, p. 969-1006.
- Wright, T. L., Groiler, M. J., and Swanson, D. A., 1973, Chemical variation related to the stratigraphy of the Columbia River Basalt: Geological Society of America Bulletin, v. 84, p. 371-386.